

\$399,900 - 16, 5445 Hwy 584, Rural Mountain View County

MLS® #A2043070

\$399,900

0 Bedroom, 0.00 Bathroom,
Land on 2.03 Acres

NONE, Rural Mountain View County, Alberta

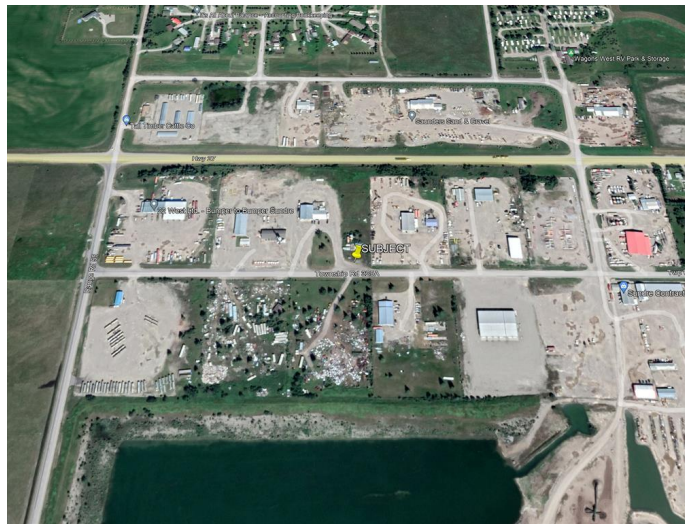
2.02 Acre fully serviced commercial lot right on the SW edge of Sundre Town Limits. large industrial park Backing onto HWY 584 only 1 km to town center. This industrial park is amongst several other industrial areas, with business including Oilfield services, Soil services, Contractors, Mechanical, Transport, etc. This lot was formerly a Commercial card lock gas pump. Perfect opportunity to start or move your business to a very well-established business park. Sundre has seen progressive growth and continues to be a great location for Industry.

Essential Information

MLS® #	A2043070
Price	\$399,900
Bathrooms	0.00
Acres	2.03
Type	Land
Sub-Type	Industrial Land
Status	Active

Community Information

Address	16, 5445 Hwy 584
Subdivision	NONE
City	Rural Mountain View County
County	Mountain View County



Province	Alberta
Postal Code	T0M1X0

Additional Information

Date Listed	April 27th, 2023
Days on Market	802
Zoning	I

Listing Details

Listing Office	GREY POWER PD REALTY INC.
----------------	---------------------------

Data is supplied by Pillar 9â„¢ MLS® System. Pillar 9â„¢ is the owner of the copyright in its MLS® System. Data is deemed reliable but is not guaranteed accurate by Pillar 9â„¢. The trademarks MLS®, Multiple Listing Service® and the associated logos are owned by The Canadian Real Estate Association (CREA) and identify the quality of services provided by real estate professionals who are members of CREA. Used under license.