

\$76,000 - 1140 12 Avenue Se, Slave Lake

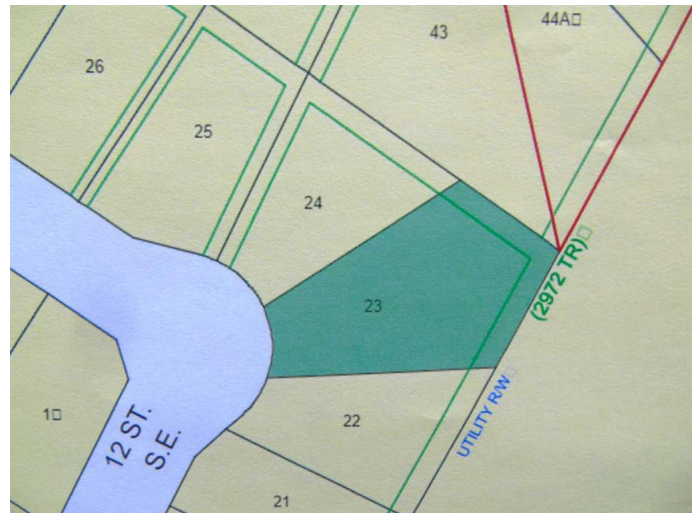
MLS® #A2125584

\$76,000

0 Bedroom, 0.00 Bathroom,
Land on 0.23 Acres

NONE, Slave Lake, Alberta

Available now!! One of the biggest serviced lots in the Southeast of Slave Lake. This massive 10,000 sq. ft pie shaped lot is zoned R1D - Detached Dwelling / Mobile Home. You can build your own home or move a modular or mobile onto this beautiful lot. The lot has all the essential municipal services: gas, power, water and sewer. It comes fully fenced, with several medium size trees on the west border and the whole lot is completely landscaped with a full lawn. This developed lot sits in quiet corner of town, near the walking trails, lots of space between neighbors and is green spaced in the back of the lot. This serviced town lot is affordable, in a great location and available at a great price!!



Essential Information

MLS® #	A2125584
Price	\$76,000
Bathrooms	0.00
Acres	0.23
Type	Land
Sub-Type	Residential Land
Status	Active

Community Information

Address	1140 12 Avenue Se
Subdivision	NONE
City	Slave Lake



County	Lesser Slave River No. 124, M.D. of
Province	Alberta
Postal Code	T0G 2A3

Amenities

Utilities	Electricity Available, Garbage Collection, Natural Gas Available, Phone Available, Sewer Available, Water Available
-----------	---

Exterior

Lot Description	Backs on to Park/Green Space, Cleared, Few Trees, Gentle Sloping, Lawn, Pie Shaped Lot
-----------------	--

Additional Information

Date Listed	April 24th, 2024
Days on Market	376
Zoning	R1D Detached Dwelling / M

Listing Details

Listing Office	CENTURY 21 NORTHERN REALTY
----------------	----------------------------

Data is supplied by Pillar 9â„¢ MLS® System. Pillar 9â„¢ is the owner of the copyright in its MLS® System. Data is deemed reliable but is not guaranteed accurate by Pillar 9â„¢. The trademarks MLS®, Multiple Listing Service® and the associated logos are owned by The Canadian Real Estate Association (CREA) and identify the quality of services provided by real estate professionals who are members of CREA. Used under license.