

# \$39,900 - 20 Railway Avenue E, Marshall

MLS® #A2151544

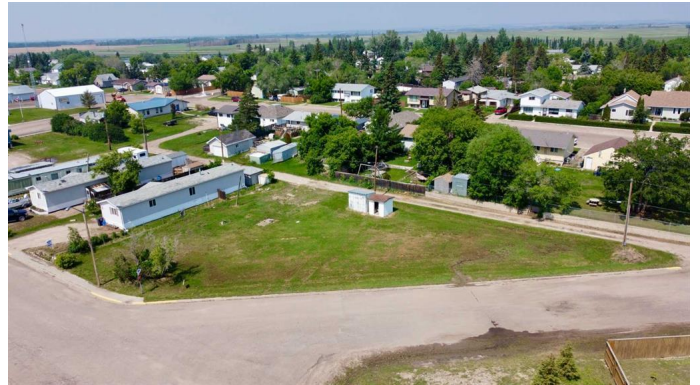
**\$39,900**

0 Bedroom, 0.00 Bathroom,  
Land on 0.52 Acres

NONE, Marshall, Saskatchewan

Welcome to 20 Railway Avenue, Marshall, SK.

This spacious property offers a prime location in Marshall, Saskatchewan, just minutes from Lloydminster City. Situated on a large double lot, this property boasts 0.32 acres of land, providing ample space to create a comfortable home for your family. The sizeable lot presents numerous possibilities, making it ideal for those seeking to establish a home-based business or enjoy an affordable lifestyle with plenty of room for recreational vehicles and other outdoor toys. Whether you envision a peaceful sanctuary or a bustling hub of activity, this property offers the flexibility to accommodate your unique needs. The corner lot position ensures convenient access and visibility, while its proximity to the main street grants easy connectivity to the surrounding community. Dwelling-type restrictions apply.



## Essential Information

MLS® #	A2151544
Price	\$39,900
Bathrooms	0.00
Acres	0.52
Type	Land
Sub-Type	Residential Land
Status	Active

## Community Information

Address	20 Railway Avenue E
Subdivision	NONE
City	Marshall
County	Saskatchewan
Province	Saskatchewan
Postal Code	S0M1R0

## Additional Information

Date Listed	July 24th, 2024
Days on Market	347
Zoning	RMH

## Listing Details

Listing Office	RE/MAX OF LLOYDMINSTER
----------------	------------------------

Data is supplied by Pillar 9â„¢ MLS® System. Pillar 9â„¢ is the owner of the copyright in its MLS® System. Data is deemed reliable but is not guaranteed accurate by Pillar 9â„¢. The trademarks MLS®, Multiple Listing Service® and the associated logos are owned by The Canadian Real Estate Association (CREA) and identify the quality of services provided by real estate professionals who are members of CREA. Used under license.