

\$199,900 - 14 Kale Drive, Rural Vermilion River, County of

MLS® #A2181839

\$199,900

0 Bedroom, 0.00 Bathroom,
Land on 2.89 Acres

Willow Creek Estates (NW), Rural Vermilion River, County of, Alberta

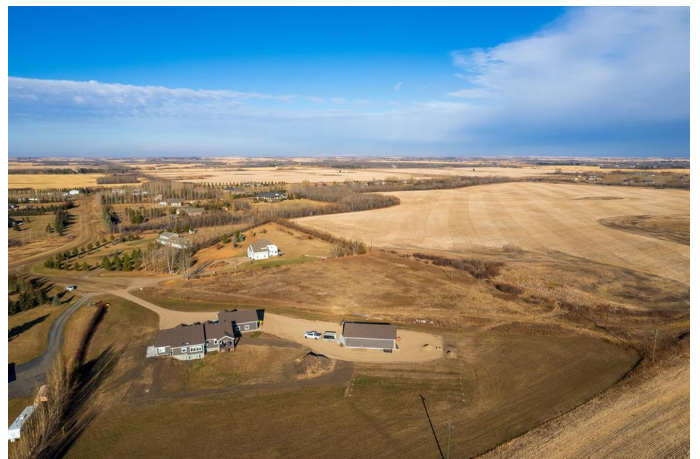
Established in the sought after acreage subdivision of Willow Creek Estates which is located in the Lloydminster school district. Only minutes from town make this location a rare find. This lot has the capability to be the destination of your DREAM HOME! Build to suit on this lot nestled in a quiet cul de sac backing onto green space with no back neighbours. Enjoy the acreage lifestyle with the convenience of living minutes from town.

Essential Information

MLS® #	A2181839
Price	\$199,900
Bathrooms	0.00
Acres	2.89
Type	Land
Sub-Type	Residential Land
Status	Active

Community Information

Address	14 Kale Drive
Subdivision	Willow Creek Estates (NW)
City	Rural Vermilion River, County of
County	Vermilion River, County of
Province	Alberta
Postal Code	T9V 3C3



Exterior

Lot Description Level, Irregular Lot

Additional Information

Date Listed December 3rd, 2024
Days on Market 184
Zoning Acreage

Listing Details

Listing Office eXp Realty (Lloyd)

Data is supplied by Pillar 9â„¢ MLSÂ® System. Pillar 9â„¢ is the owner of the copyright in its MLSÂ® System. Data is deemed reliable but is not guaranteed accurate by Pillar 9â„¢. The trademarks MLSÂ®, Multiple Listing ServiceÂ® and the associated logos are owned by The Canadian Real Estate Association (CREA) and identify the quality of services provided by real estate professionals who are members of CREA. Used under license.