

\$460,000 - 724 Florence Ho Leong Crescent N, Lethbridge

MLS® #A2183451

\$460,000

3 Bedroom, 2.00 Bathroom, 924 sqft
Residential on 0.08 Acres

Legacy Ridge / Hardieville, Lethbridge, Alberta

Welcome to this stunning 4-level split house situated in a desirable neighborhood, conveniently located near schools and parks. As you enter, you are greeted by a welcoming foyer that sets the tone for the rest of the home. On the main level, you will discover a spacious kitchen designed with both style and practicality in mind. The kitchen features a generous long island, perfect for family meals, casual dining, and gatherings with friends. The island provides more counter space for food preparation and is an ideal spot for loved ones to congregate while you cook. Adjacent to the kitchen, the open-concept living and dining areas create an inviting space for relaxation and entertainment. The living room also boasts large windows. On the second level you have the primary bedroom and another ample bedroom along with a full bathroom which features jetted tub and separate shower. The 3 third level features a cozy family room with easy access to the backyard, perfect for movie nights or game days, an another bathroom. On the fourth level you will find an spacious bedroom , laundry room and a vast storage/den. Additionally there is also a double detached garage and generous backyard. Don't miss out on this one!

Built in 2009

Essential Information



| | |
|----------------|---------------|
| MLS® # | A2183451 |
| Price | \$460,000 |
| Bedrooms | 3 |
| Bathrooms | 2.00 |
| Full Baths | 2 |
| Square Footage | 924 |
| Acres | 0.08 |
| Year Built | 2009 |
| Type | Residential |
| Sub-Type | Detached |
| Style | 4 Level Split |
| Status | Active |

Community Information

| | |
|-------------|----------------------------|
| Address | 724 Florence Ho Leong Cres |
| Subdivision | Legacy Ridge / Hardieville |
| City | Lethbridge |
| County | Lethbridge |
| Province | Alberta |
| Postal Code | T1H5R5 |

Amenities

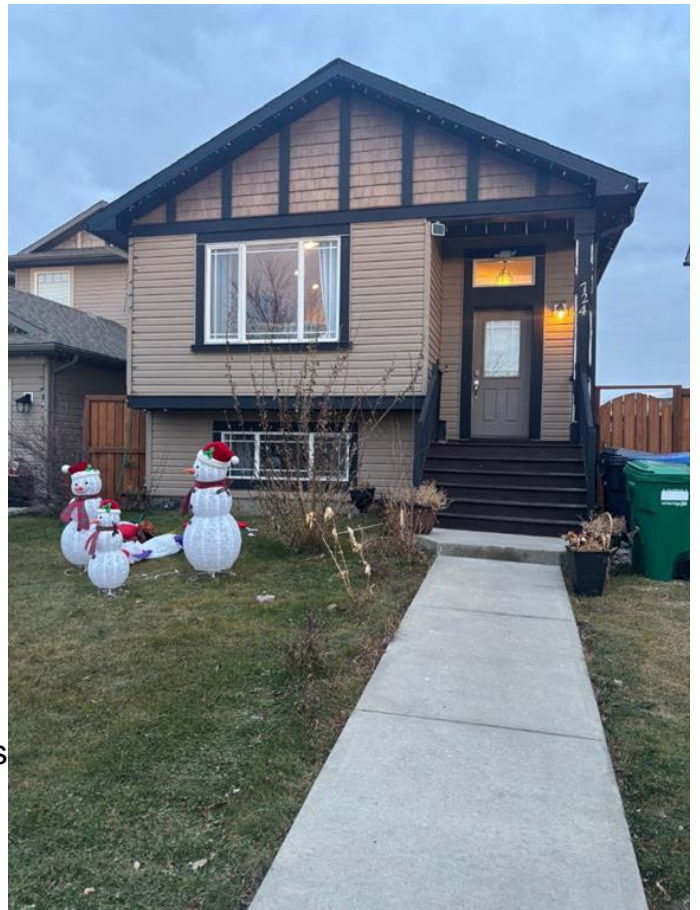
| | |
|----------------|------------------------|
| Parking Spaces | 2 |
| Parking | Double Garage Detached |
| # of Garages | 2 |

Interior

| | |
|-------------------|--|
| Interior Features | Ceiling Fan(s), Sump Pump, Separate Entrance, Tankless |
| Appliances | Dishwasher, Electric Stove, Heater |
| Heating | Forced Air, Natural Gas |
| Cooling | None |
| Has Basement | Yes |
| Basement | Finished, Full, Walk-Out |

Exterior

| | |
|-------------------|--------------------------|
| Exterior Features | Garden, Private Entrance |
| Lot Description | Landscaped |



| | |
|--------------|-----------------|
| Roof | Asphalt Shingle |
| Construction | Vinyl Siding |
| Foundation | Poured Concrete |

Additional Information

| | |
|----------------|---------------------|
| Date Listed | December 14th, 2024 |
| Days on Market | 153 |
| Zoning | R-SL |

Listing Details

| | |
|----------------|---------------------------------|
| Listing Office | RE/MAX REAL ESTATE - LETHBRIDGE |
|----------------|---------------------------------|

Data is supplied by Pillar 9â„¢ MLS® System. Pillar 9â„¢ is the owner of the copyright in its MLS® System. Data is deemed reliable but is not guaranteed accurate by Pillar 9â„¢. The trademarks MLS®, Multiple Listing Service® and the associated logos are owned by The Canadian Real Estate Association (CREA) and identify the quality of services provided by real estate professionals who are members of CREA. Used under license.