

\$399,000 - 532, 260300 Writing Creek Crescent, Balzac

MLS® #A2190207

\$399,000

0 Bedroom, 0.00 Bathroom,
Commercial on 0.00 Acres

NONE, Balzac, Alberta

Welcome to New Horizon Mall, Calgary's rapidly growing shopping plaza, located adjacent to the iconic Crossiron Mills. Just minutes from Calgary and Airdrie, this hotspot attracts visitors from around the globe, providing unparalleled visibility and foot traffic for your business.

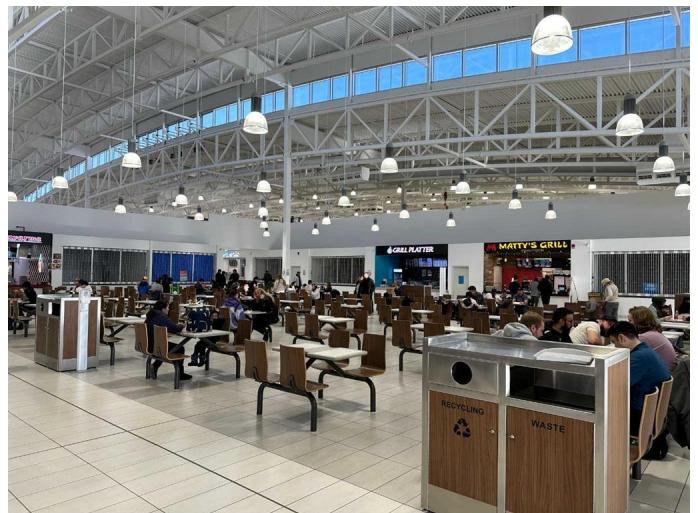
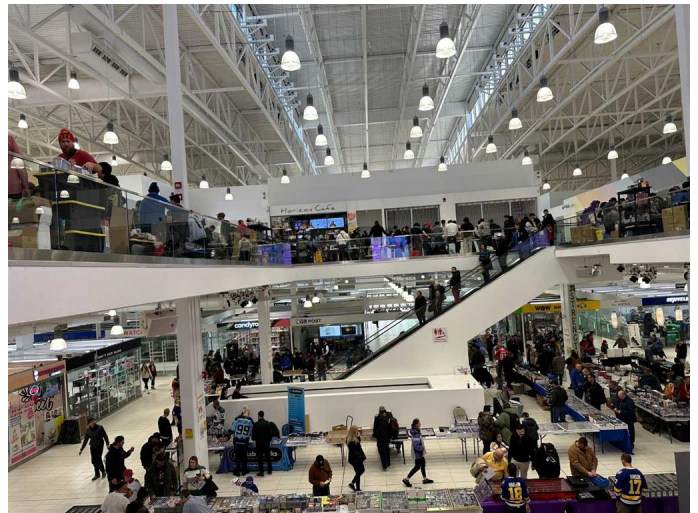
This prime food court unit is strategically situated at the entrance of the food court, ensuring maximum exposure and convenience for customers. New Horizon Mall is home to several major tenants, including a popular indoor children's playground that draws in a substantial number of families daily. This existing clientele offers your food business a stable revenue stream and exceptional return on investment potential.

One of the most exciting benefits of owning a unit here is the opportunity to eliminate rent payments entirely while enjoying long-term capital appreciation on your investment. Don't miss out on this extraordinary opportunity—book your showing today!

Built in 2018

Essential Information

MLS® #	A2190207
Price	\$399,000
Bathrooms	0.00



Acres	0.00
Year Built	2018
Type	Commercial
Sub-Type	Mixed Use
Status	Active

Community Information

Address	532, 260300 Writing Creek Crescent
Subdivision	NONE
City	Balzac
County	Rocky View County
Province	Alberta
Postal Code	T4A 0X8

Additional Information

Date Listed	January 25th, 2025
Days on Market	230
Zoning	DC

Listing Details

Listing Office	Homecare Realty Ltd.
----------------	----------------------

Data is supplied by Pillar 9â„¢ MLS® System. Pillar 9â„¢ is the owner of the copyright in its MLS® System. Data is deemed reliable but is not guaranteed accurate by Pillar 9â„¢. The trademarks MLS®, Multiple Listing Service® and the associated logos are owned by The Canadian Real Estate Association (CREA) and identify the quality of services provided by real estate professionals who are members of CREA. Used under license.