

\$74,900 - Block 1 Lot 7 Eastwood Ridge Estates, Rural Woodlands County

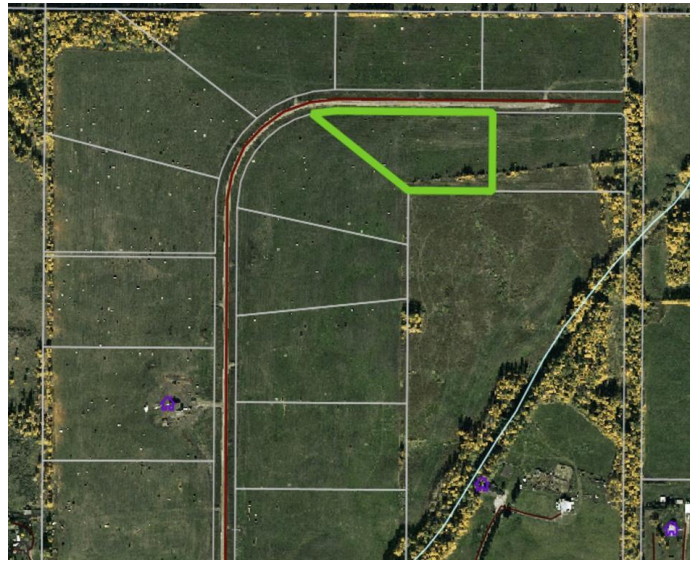
MLS® #A2203963

\$74,900

0 Bedroom, 0.00 Bathroom,
Land on 5.02 Acres

NONE, Rural Woodlands County, Alberta

Lovely location just off the pavement east of Whitecourt. These lots range from 5 acres to 10.9 acres. Use your own developer to build your dream home. Lots have very good views, excellent roads, gas and power to the property lines, and good water in the area. GST included in the list price



Essential Information

| | |
|-----------|------------------|
| MLS® # | A2203963 |
| Price | \$74,900 |
| Bathrooms | 0.00 |
| Acres | 5.02 |
| Type | Land |
| Sub-Type | Residential Land |
| Status | Active |

Community Information

| | |
|-------------|------------------------------|
| Address | Block 1 Lot 7 Eastwood Ridge |
| Subdivision | NONE |
| City | Rural Woodlands County |
| County | Woodlands County |
| Province | Alberta |
| Postal Code | T7S 2A2 |

Amenities

| | |
|-----------|--|
| Utilities | Electricity at Lot Line, Natural Gas at Lot Line |
|-----------|--|

Additional Information

| | |
|----------------|------------------|
| Date Listed | March 19th, 2025 |
| Days on Market | 179 |
| Zoning | CR |

Listing Details

| | |
|----------------|-------------------------------|
| Listing Office | RE/MAX ADVANTAGE (WHITECOURT) |
|----------------|-------------------------------|

Data is supplied by Pillar 9â„¢ MLS® System. Pillar 9â„¢ is the owner of the copyright in its MLS® System. Data is deemed reliable but is not guaranteed accurate by Pillar 9â„¢. The trademarks MLS®, Multiple Listing Service® and the associated logos are owned by The Canadian Real Estate Association (CREA) and identify the quality of services provided by real estate professionals who are members of CREA. Used under license.