

\$15 - 108, 1310 Kingsway Avenue Se, Medicine Hat

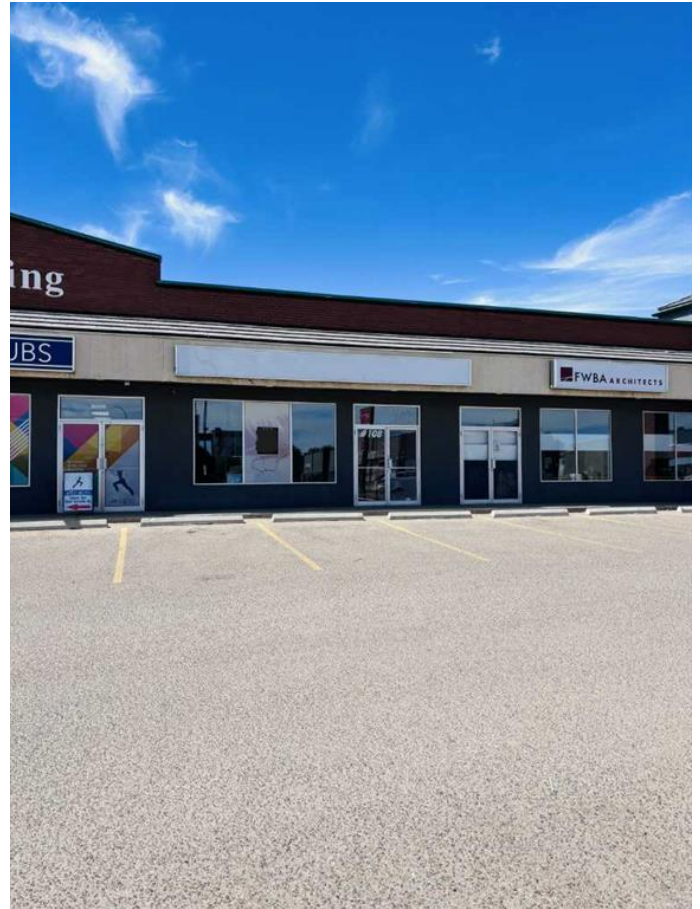
MLS® #A2211841

\$15

0 Bedroom, 0.00 Bathroom,
Commercial on 0.00 Acres

NONE, Medicine Hat, Alberta

Looking for a great retail space in Medicine Hat? This space in Kingsway Crossing has been thoughtfully decorated, has loads of natural light including a skylight, a large front retail area with change rooms, rear storage area with kitchenette, office, washroom and rear entrance from rear parking lot, plus is professionally managed by a locally licensed firm. Starting at \$15.00NNN plus \$7.50/sq.ft. estimated occupancy costs per annum or \$2,880.00 plus GST, per month, plus separately metered utilities. Average monthly utilities are \$250.00 plus GST. Available immediately! Five year lease term preferred including an annual escalation.



Built in 2001

Essential Information

MLS® #	A2211841
Price	\$15
Bathrooms	0.00
Acres	0.00
Year Built	2001
Type	Commercial
Sub-Type	Retail
Status	Active

Community Information

Address	108, 1310 Kingsway Avenue Se
Subdivision	NONE

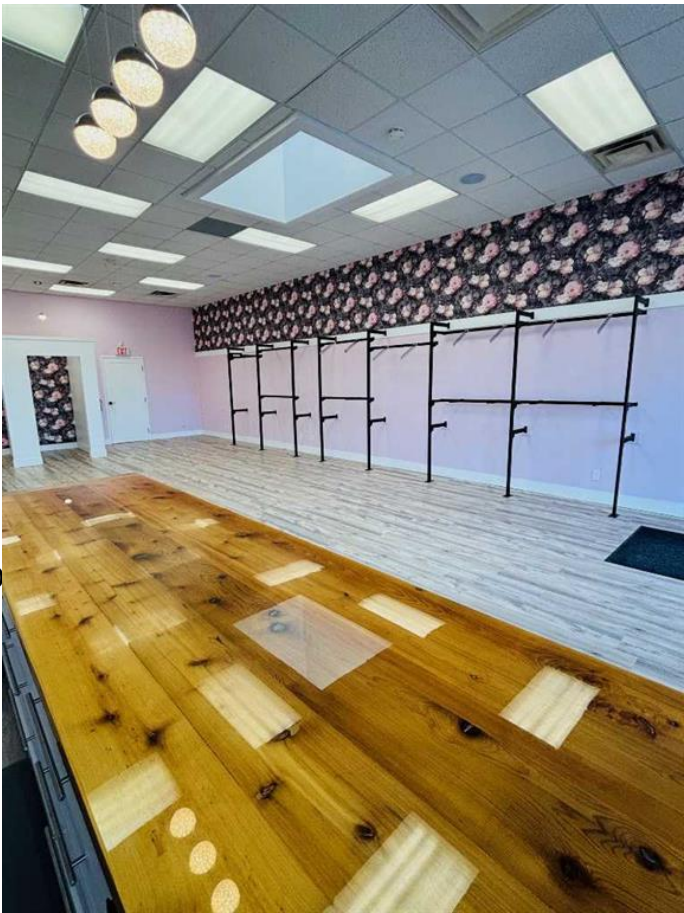
City Medicine Hat
County Medicine Hat
Province Alberta
Postal Code T1A 2Y4

Additional Information

Date Listed April 14th, 2025
Days on Market 107
Zoning MU

Listing Details

Listing Office TMV PROPERTY GROUP LTD



Data is supplied by Pillar 9â„¢ MLSÂ® System. Pillar 9â„¢ is the owner of the copyright in its MLSÂ® System. Data is deemed reliable but is not guaranteed accurate by Pillar 9â„¢. The trademarks MLSÂ®, Multiple Listing ServiceÂ® and the associated logos are owned by The Canadian Real Estate Association (CREA) and identify the quality of services provided by real estate professionals who are members of CREA. Used under license.

