

\$1,260,000 - 270230 Dead Horse Road Se, Rural Rocky View County

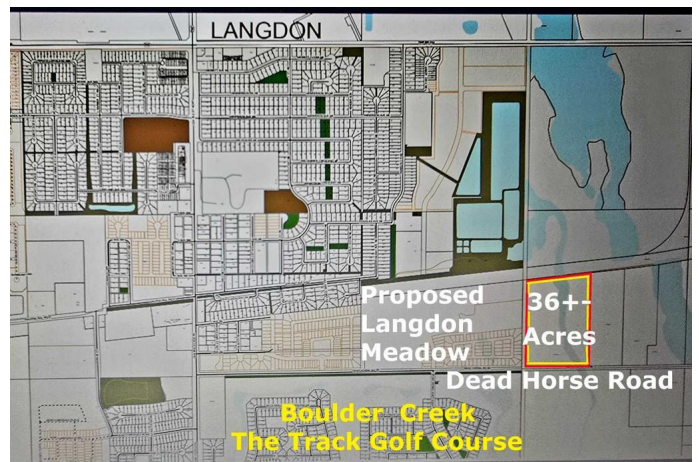
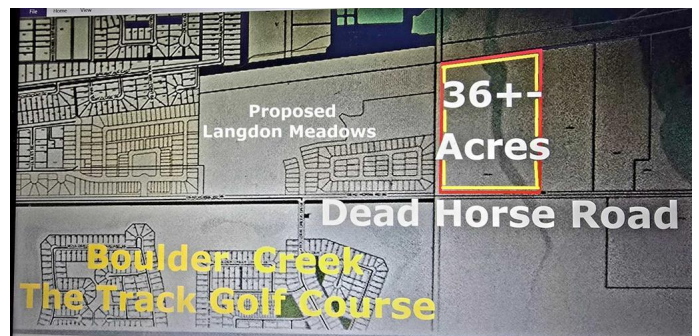
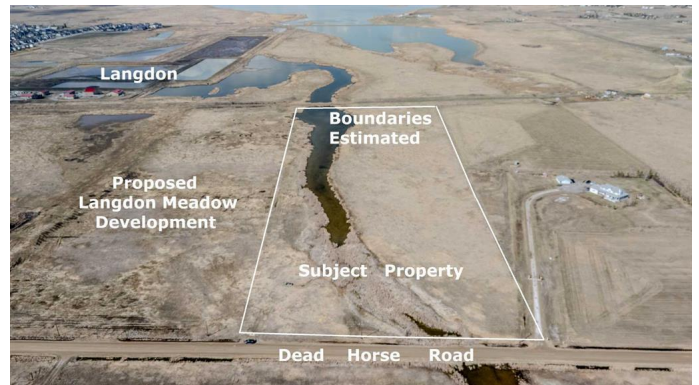
MLS® #A2214751

\$1,260,000

0 Bedroom, 0.00 Bathroom,
Land on 35.98 Acres

NONE, Rural Rocky View County, Alberta

36+- Acres on Dead Horse Road immediately Adjacent to the proposed Langdon Meadow Phase 1 residential development and nearby to Boulder Creek and The Track Golf Course. Lots of development underway in Langdon and a great opportunity to plan for the future. GST may be applicable.



Essential Information

| | |
|-----------|-----------------|
| MLS® # | A2214751 |
| Price | \$1,260,000 |
| Bathrooms | 0.00 |
| Acres | 35.98 |
| Type | Land |
| Sub-Type | Commercial Land |
| Status | Active |

Community Information

| | |
|-------------|---------------------------|
| Address | 270230 Dead Horse Road Se |
| Subdivision | NONE |
| City | Rural Rocky View County |
| County | Rocky View County |
| Province | Alberta |
| Postal Code | T0J 1X2 |

Amenities

| | |
|-----------|--|
| Utilities | Electricity Available, Natural Gas Available |
|-----------|--|

Additional Information

| | |
|----------------|------------------|
| Date Listed | April 30th, 2025 |
| Days on Market | 59 |
| Zoning | A-SML |

Listing Details

| | |
|----------------|-----------------------------|
| Listing Office | Legacy Real Estate Services |
|----------------|-----------------------------|

Data is supplied by Pillar 9â„¢ MLS® System. Pillar 9â„¢ is the owner of the copyright in its MLS® System. Data is deemed reliable but is not guaranteed accurate by Pillar 9â„¢. The trademarks MLS®, Multiple Listing Service® and the associated logos are owned by The Canadian Real Estate Association (CREA) and identify the quality of services provided by real estate professionals who are members of CREA. Used under license.