

\$2,750 - 22 Northlander Lane W, Lethbridge

MLS® #A2216250

\$2,750

0 Bedroom, 0.00 Bathroom, 1,334 sqft

Rental on 0.00 Acres

Garry Station, Lethbridge, Alberta

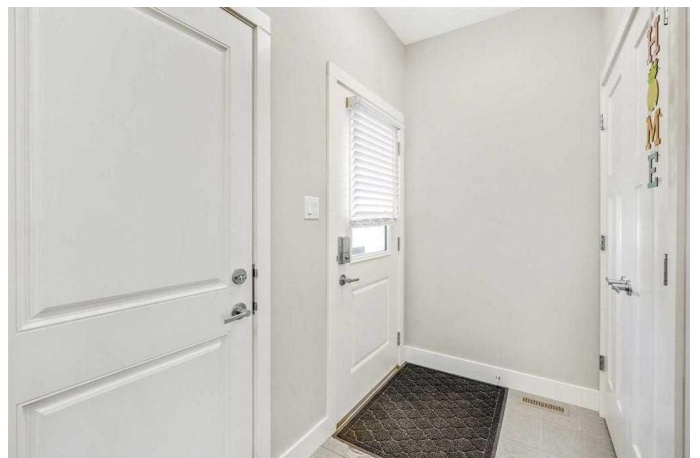
4 Bedroom, 3.5 Bath Two-storey house in Garry Station.

This beautifully designed rental home offers a perfect blend of modern elegance and comfort, ideal for families or professionals seeking a quality living experience. The main floor features a stunning open-concept layout that seamlessly connects the living, dining, and kitchen areas, creating a welcoming space for both entertaining and everyday life. The gourmet kitchen is equipped with a built-in wall oven and microwave, a 5-burner Bertazzoni cooktop, quartz countertops, and a spacious walk-in pantry, providing everything you need for culinary inspiration.

Throughout the home, luxurious finishes such as laminate flooring and plush carpeting in the bedrooms add both style and comfort. Walk-in closets offer ample storage space, and the large composite deck, overlooking the expansive backyard, is perfect for outdoor dining or relaxing. With central air conditioning, the home ensures comfort year-round.

To top it off, the newly renovated basement adds even more living space, ideal for additional storage, a recreation room, or whatever suits your needs. This home is a perfect blend of modern amenities and thoughtful design, ready to offer a high-quality living experience. **Available June 1st!**

\$2750.00 + Utilities



****Pets Allowed****

Subject to \$50.00 per pet fee, per month

Application required prior to viewing.

Security Deposit: \$2750.00

Essential Information

| | |
|----------------|----------|
| MLS® # | A2216250 |
| Price | \$2,750 |
| Bathrooms | 0.00 |
| Square Footage | 1,334 |
| Acres | 0.00 |
| Type | Rental |
| Status | Active |

Community Information

| | |
|-------------|-----------------------|
| Address | 22 Northlander Lane W |
| Subdivision | Garry Station |
| City | Lethbridge |
| County | Lethbridge |
| Province | Alberta |
| Postal Code | T1J 5N1 |

Amenities

| | |
|---------|------------------------|
| Parking | Double Garage Attached |
|---------|------------------------|

Interior

| | |
|------------|--|
| Appliances | Central Air Conditioner, Dishwasher, Microwave, Oven, Refrigerator, Stove(s), Washer/Dryer, Window Coverings |
|------------|--|

Exterior

| | |
|------|-----------------|
| Roof | Asphalt Shingle |
|------|-----------------|

Additional Information

| | |
|----------------|------------------|
| Date Listed | April 30th, 2025 |
| Days on Market | 6 |

Listing Details

| | |
|----------------|-------------------------|
| Listing Office | Grassroots Realty Group |
|----------------|-------------------------|

Data is supplied by Pillar 9â„¢ MLS® System. Pillar 9â„¢ is the owner of the copyright in its MLS® System. Data is deemed reliable but is not guaranteed accurate by Pillar 9â„¢. The trademarks MLS®, Multiple Listing Service® and the associated logos are owned by The Canadian Real Estate Association (CREA) and identify the quality of services provided by real estate professionals who are members of CREA. Used under license.