

# \$474,900 - 31 Eldridge Crescent, Red Deer

MLS® #A2217793

## \$474,900

4 Bedroom, 4.00 Bathroom, 1,567 sqft

Residential on 0.13 Acres

Eastview, Red Deer, Alberta

Spacious family home on a quiet crescent! This 2 storey family home offers a functional layout with room to grow, featuring a large living area, basement flex room currently optimized for a gym but also perfect for an office, and a beautiful sunroom filled with natural light. Nestled in a mature, family-friendly neighborhood close to parks, schools, and amenities. A must-see for buyers seeking space, comfort, and a peaceful location!

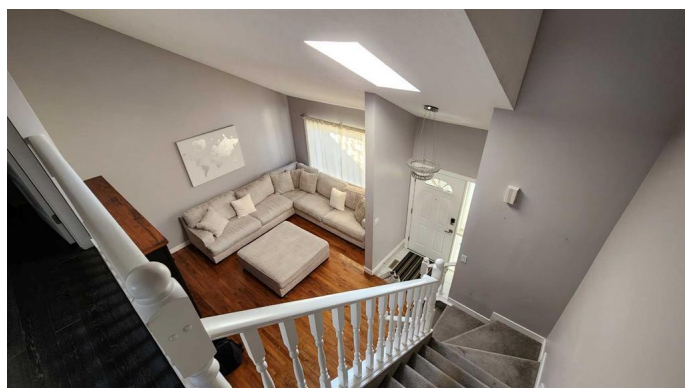
Built in 1987

### Essential Information

MLS® #	A2217793
Price	\$474,900
Bedrooms	4
Bathrooms	4.00
Full Baths	3
Half Baths	1
Square Footage	1,567
Acres	0.13
Year Built	1987
Type	Residential
Sub-Type	Detached
Style	2 Storey
Status	Active

### Community Information

Address 31 Eldridge Crescent



Subdivision	Eastview
City	Red Deer
County	Red Deer
Province	Alberta
Postal Code	T4R 2C9

### Amenities

Parking Spaces	4
Parking	Double Garage Attached
# of Garages	2

### Interior

Interior Features	See Remarks
Appliances	Dishwasher, Oven, Refrigerator, See Remarks, Washer/Dryer
Heating	Forced Air, Natural Gas
Cooling	None
Fireplace	Yes
# of Fireplaces	1
Fireplaces	Wood Burning
Has Basement	Yes
Basement	Finished, Full

### Exterior

Exterior Features	Garden, Other
Lot Description	Back Lane, Back Yard, City Lot, Garden, Landscaped, Other, See Remarks
Roof	Asphalt Shingle
Construction	See Remarks
Foundation	Other, Wood

### Additional Information

Date Listed	May 5th, 2025
Days on Market	9
Zoning	R1

### Listing Details

Listing Office	Royal LePage Benchmark
----------------	------------------------

Data is supplied by Pillar 9â„¢ MLSÂ® System. Pillar 9â„¢ is the owner of the copyright in its MLSÂ® System. Data is deemed reliable but is not guaranteed accurate by Pillar 9â„¢. The trademarks MLSÂ®, Multiple Listing ServiceÂ® and the associated logos are owned by The Canadian Real Estate Association (CREA) and identify the quality of services

