

\$609,900 - 12 Bridlewood Crescent Sw, Calgary

MLS® #A2218907

\$609,900

3 Bedroom, 3.00 Bathroom, 1,319 sqft
Residential on 0.07 Acres

Bridlewood, Calgary, Alberta

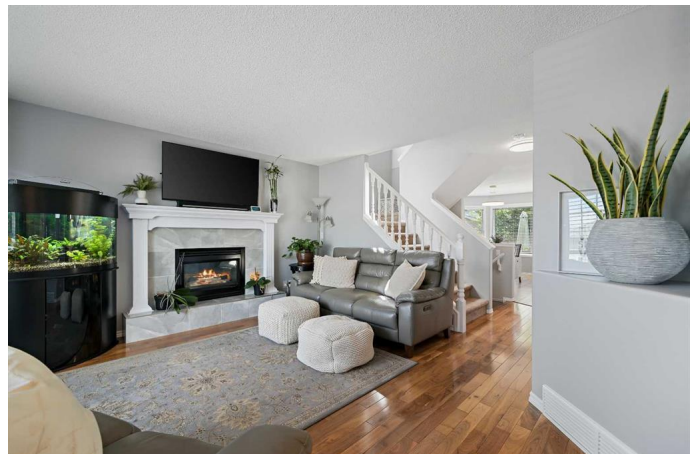
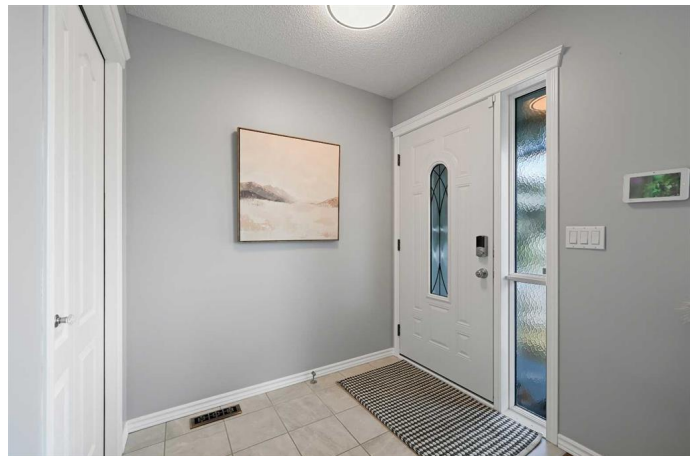
Nestled in a quiet, family-oriented community, this well-maintained home is the perfect blend of comfort, functionality, and thoughtful upgrades. From the cheerful, light-filled interior to the beautifully landscaped backyard, every detail has been carefully considered to create a welcoming and versatile living space.

Step inside and experience the warmth of natural light streaming through large windows, especially in the bright and inviting kitchen. This space is as practical as it is stylish, featuring a central island, corner pantry, and plenty of storage—ideal for everyday living and hosting guests alike. Adjacent to the kitchen, the main-floor laundry area provides convenience, while elegant hardwood and vinyl plank flooring throughout adds timeless appeal and durability.

Upstairs, the spacious primary bedroom offers a private retreat complete with a walk-in closet and a well-appointed four-piece ensuite. Two additional bedrooms and a second four-piece bathroom round out the upper level, offering ample space for a growing family.

The fully finished basement adds versatility to the home, featuring a generous family room and a flexible recreation area—perfect for movie nights, a home office, fitness zone, or play space.

Step outside to the composite deck, a true



extension of the living space and ideal for entertaining. The backyard is fully landscaped and ready for summer enjoyment. The oversized, insulated, and heated garage offers exceptional value and practicality—whether for vehicles, storage, or a workshop setup.

Additional upgrades include: Central air conditioning, Permanent exterior lighting, Newer roof (2019), Hot water tank (2020), Top floor windows replaced (2017).

Located in the heart of Bridlewood, this home is surrounded by expansive parks, green spaces, and reputable schools, including JJ O’Brien and Bridlewood School. Children can enjoy nearby playgrounds and sports fields, while families benefit from a full range of nearby amenities—shopping centres, grocery stores, dining, entertainment, and renowned local attractions such as Spruce Meadows.

This property offers exceptional lifestyle and value in a sought-after southwest Calgary community. Don’t miss the opportunity to make this beautiful home your own, come fall in love today!

Built in 1997

Essential Information

MLS® #	A2218907
Price	\$609,900
Bedrooms	3
Bathrooms	3.00
Full Baths	2
Half Baths	1
Square Footage	1,319
Acres	0.07
Year Built	1997
Type	Residential

Sub-Type	Detached
Style	2 Storey
Status	Active

Community Information

Address	12 Bridlewood Crescent Sw
Subdivision	Bridlewood
City	Calgary
County	Calgary
Province	Alberta
Postal Code	T2Y 3N1

Amenities

Parking Spaces	2
Parking	Double Garage Detached, Heated Garage, Insulated
# of Garages	2

Interior

Interior Features	Ceiling Fan(s), Kitchen Island, Pantry, See Remarks, Walk-In Closet(s)
Appliances	Central Air Conditioner, Dishwasher, Dryer, Electric Stove, Microwave, Refrigerator, Washer, Window Coverings
Heating	Forced Air
Cooling	Central Air
Fireplace	Yes
# of Fireplaces	1
Fireplaces	Gas
Has Basement	Yes
Basement	Finished, Full

Exterior

Exterior Features	Private Yard
Lot Description	Back Lane, Back Yard, Landscaped, See Remarks
Roof	Asphalt Shingle
Construction	Vinyl Siding, Wood Frame
Foundation	Poured Concrete

Additional Information

Date Listed	May 9th, 2025
Days on Market	15

Zoning R-G

Listing Details

Listing Office RE/MAX First

Data is supplied by Pillar 9â„¢ MLSÂ® System. Pillar 9â„¢ is the owner of the copyright in its MLSÂ® System. Data is deemed reliable but is not guaranteed accurate by Pillar 9â„¢. The trademarks MLSÂ®, Multiple Listing ServiceÂ® and the associated logos are owned by The Canadian Real Estate Association (CREA) and identify the quality of services provided by real estate professionals who are members of CREA. Used under license.