

# \$1,600,000 - 112 Strathlea Place Sw, Calgary

MLS® #A2219481

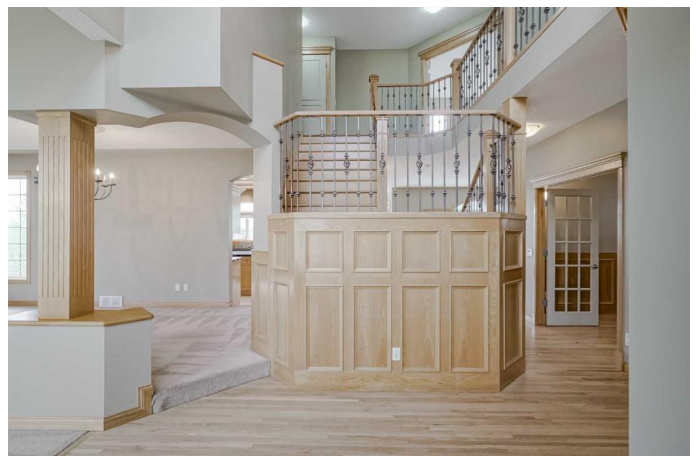
**\$1,600,000**

6 Bedroom, 4.00 Bathroom, 2,733 sqft

Residential on 0.24 Acres

Strathcona Park, Calgary, Alberta

OPEN HOUSE SATURDAY MAY 24th and SUNDAY MAY 25th 12-2pm. Welcome to this exquisite six-bedroom, two-storey walkout home with soaring ceilings, nestled in the heart of the prestigious Strathcona Park community. Situated on a massive pie-shaped lot and backing onto a tranquil ravine, this property offers a private backyard oasis surrounded by mature trees and nature trails. Step inside to a grand staircase that flows seamlessly into the elegant main floor, featuring a formal living and dining room ideal for entertaining. The spacious family room showcases custom built-in cabinetry and a cozy fireplace, while the chef's kitchen is equipped with granite countertops, stainless steel appliances including a gas stove, a large eat-up island, and a sink that overlooks the scenic backyard. A generous office with built-in shelves and cabinetry, a half bath, and a separate laundry room with a sink complete the main level. Upstairs, you'll find three generously sized bedrooms, a four-piece bathroom, and a luxurious primary suite boasting a five-piece ensuite with a makeup vanity and a large walk-in closet. The fully developed walkout basement adds even more living space with two additional bedrooms, a four-piece bathroom, a wine and storage room, and a spacious recreation room featuring a wet bar—perfect for entertaining. An oversized double garage provides ample parking and storage. Located within walking distance to Dr. Roberta Bondar School and Aspen Landing



Shopping Centre, this stunning property offers not just a home, but an exceptional lifestyle choice.

Built in 2001

### Essential Information

MLS® #	A2219481
Price	\$1,600,000
Bedrooms	6
Bathrooms	4.00
Full Baths	3
Half Baths	1
Square Footage	2,733
Acres	0.24
Year Built	2001
Type	Residential
Sub-Type	Detached
Style	2 Storey
Status	Active

### Community Information

Address	112 Strathlea Place Sw
Subdivision	Strathcona Park
City	Calgary
County	Calgary
Province	Alberta
Postal Code	T3H 4T6

### Amenities

Parking Spaces	4
Parking	Double Garage Attached
# of Garages	2

### Interior

Interior Features	Granite Counters, See Remarks, Wet Bar
Appliances	Dishwasher, Garage Control(s), Gas Stove, Microwave, Range Hood, Refrigerator, Washer/Dryer, Bar Fridge

Heating	Forced Air, Natural Gas
Cooling	None
Fireplace	Yes
# of Fireplaces	1
Fireplaces	Gas
Has Basement	Yes
Basement	Finished, Full, Walk-Out

## Exterior

Exterior Features	Balcony, Courtyard, Private Yard
Lot Description	Backs on to Park/Green Space
Roof	Asphalt Shingle
Construction	Stone, Stucco
Foundation	Poured Concrete

## Additional Information

Date Listed	May 22nd, 2025
Days on Market	18
Zoning	R-G

## Listing Details

Listing Office	eXp Realty
----------------	------------

Data is supplied by Pillar 9â„¢ MLS® System. Pillar 9â„¢ is the owner of the copyright in its MLS® System. Data is deemed reliable but is not guaranteed accurate by Pillar 9â„¢. The trademarks MLS®, Multiple Listing Service® and the associated logos are owned by The Canadian Real Estate Association (CREA) and identify the quality of services provided by real estate professionals who are members of CREA. Used under license.