

# \$225,000 - 4914 52 Avenue, Rimbey

MLS® #A2220204

**\$225,000**

2 Bedroom, 1.00 Bathroom, 673 sqft

Residential on 0.13 Acres

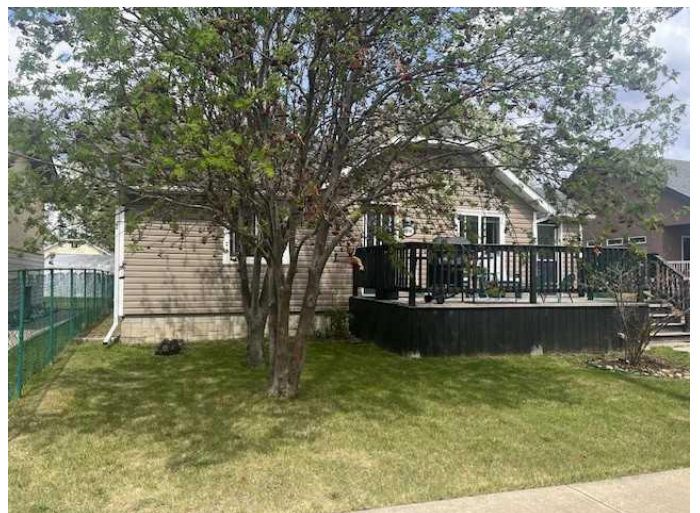
NONE, Rimbey, Alberta

FANTASTIC INVESTMENT PROPERTY or STARTER HOME! On a quiet street, enjoy the beautiful outdoors on your large deck overlooking a large park and greenspace. With tons of parking and back alley access, with the privacy of your own backyard with mature trees, and large shed for extra storage and room for RV parking. This cozy home is filled with character and is well maintained. Step inside and appreciate the updated tile and hardwood flooring. Newer vinyl windows offer lots of light. The open floorplan allows for great use of spaces.. The updated kitchen offers great counter and cabinet storage space leads to the family room, with an additional foyer to your front deck and a gorgeous log fireplace detailed in stone. Enter through French doors to the primary bedroom. The 4 piece bathroom has also been updated and features a jetted tub . Other updates over the recent years include PEX plumbing, shingles, hot water tank and R40 blow in attic insulation. Rimbey is a great community for individuals, and families of all ages.

Built in 1948

## Essential Information

MLS® #	A2220204
Price	\$225,000
Bedrooms	2
Bathrooms	1.00



Full Baths	1
Square Footage	673
Acres	0.13
Year Built	1948
Type	Residential
Sub-Type	Detached
Style	Bungalow
Status	Active

### **Community Information**

Address	4914 52 Avenue
Subdivision	NONE
City	Rimbey
County	Ponoka County
Province	Alberta
Postal Code	T0C 2J0

### **Amenities**

Parking Spaces	6
Parking	None, Off Street, Parking Pad, RV Access/Parking

### **Interior**

Interior Features	See Remarks
Appliances	Dishwasher, Refrigerator, Stove(s), Washer/Dryer
Heating	Forced Air, Natural Gas
Cooling	None
Fireplace	Yes
# of Fireplaces	1
Fireplaces	Gas
Has Basement	Yes
Basement	Crawl Space, Exterior Entry, Partial, Unfinished

### **Exterior**

Exterior Features	Private Yard
Lot Description	Back Lane, Back Yard, City Lot, Front Yard, Lawn, Level, Many Trees, Private
Roof	Asphalt Shingle
Construction	Mixed
Foundation	Block

**Additional Information**

Date Listed	May 12th, 2025
Days on Market	19
Zoning	R2

**Listing Details**

Listing Office	RE/MAX real estate central alberta
----------------	------------------------------------

Data is supplied by Pillar 9â„¸ MLSÂ® System. Pillar 9â„¸ is the owner of the copyright in its MLSÂ® System. Data is deemed reliable but is not guaranteed accurate by Pillar 9â„¸. The trademarks MLSÂ®, Multiple Listing ServiceÂ® and the associated logos are owned by The Canadian Real Estate Association (CREA) and identify the quality of services provided by real estate professionals who are members of CREA. Used under license.