

\$1,195,000 - 8, 15015 Township 424, Rural Ponoka County

MLS® #A2223103

\$1,195,000

6 Bedroom, 4.00 Bathroom, 3,289 sqft
Residential on 3.96 Acres

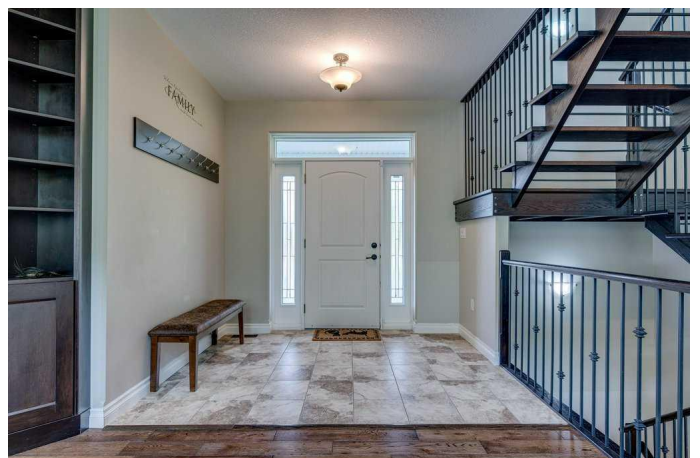
NONE, Rural Ponoka County, Alberta

Stunning Acreage Retreat â€” 3.96 Acres Just 9 Minutes East of Rimbey!

Discover this beautifully updated & meticulously maintained two-story home offering nearly 4 acres of park-like surroundings. With mature trees, extensive landscaping, & a southwest-facing backyard, this property provides privacy, natural beauty, & endless outdoor space for relaxation or play. Step inside & kitchen area, and an abundance of built-in cabinetry throughout. The chefâ€™s kitchen includes a brand-new oven (April 2025) & flows seamlessly into the large dining areaâ€”perfect for entertaining. The massive main floor laundry room is fully equipped with cabinetry, a utility sink, & built-ins at the rear entry for coats and boots.

The main floor master suite is a serene retreat with views of your treed property, a generous walk-in closet, a luxurious ensuite with a huge tiled shower, his & her sinks, & a deep soaker tub. Upstairs, two spacious bedrooms & a large bonus room offers great space for family or guests.

The bright, fully finished walk-out basement is a showstopper, boasting in-floor heating, two oversized bedrooms, a full bath, a potential future wet bar area, theater & games spaces, & a massive utility/storage room. The basement opens to a stamped concrete patio, already set with two posts for your future deck plans.



Additional features include: Hunter Douglas Blinds~ New control board on the furnace~ High-efficiency furnace plus air conditioner Water filtration system with updated flow switch for chlorine control~ Built-in vacuum system (with new hose that has a 10 year warranty)~New stamped concrete walkways & front apron~ Septic cleaned (Sept 2024)~ Gas fireplace (awaiting final finish)
Huge garage with sink, drain, & three large overhead doors

Built in 2013

Essential Information

| | |
|----------------|----------------------------------|
| MLS® # | A2223103 |
| Price | \$1,195,000 |
| Bedrooms | 6 |
| Bathrooms | 4.00 |
| Full Baths | 3 |
| Half Baths | 1 |
| Square Footage | 3,289 |
| Acres | 3.96 |
| Year Built | 2013 |
| Type | Residential |
| Sub-Type | Detached |
| Style | 2 Storey, Acreage with Residence |
| Status | Active |

Community Information

| | |
|-------------|-----------------------|
| Address | 8, 15015 Township 424 |
| Subdivision | NONE |
| City | Rural Ponoka County |
| County | Ponoka County |
| Province | Alberta |
| Postal Code | T0C 2J0 |

Amenities

| | |
|--------------|------------------------|
| Parking | Triple Garage Attached |
| # of Garages | 3 |

Interior

| | |
|-------------------|--|
| Interior Features | Bookcases, Central Vacuum, High Ceilings |
| Appliances | Other |
| Heating | Forced Air, Natural Gas |
| Cooling | Central Air |
| Fireplace | Yes |
| # of Fireplaces | 1 |
| Fireplaces | Gas, Living Room |
| Has Basement | Yes |
| Basement | Finished, Full |

Exterior

| | |
|-------------------|-----------------|
| Exterior Features | Other |
| Lot Description | Landscaped |
| Roof | Asphalt |
| Construction | Stucco |
| Foundation | Poured Concrete |

Additional Information

| | |
|----------------|----------------|
| Date Listed | May 21st, 2025 |
| Days on Market | 50 |
| Zoning | CR |

Listing Details

| | |
|----------------|-----------------------------------|
| Listing Office | Royal LePage Network Realty Corp. |
|----------------|-----------------------------------|

Data is supplied by Pillar 9â„¢ MLS® System. Pillar 9â„¢ is the owner of the copyright in its MLS® System. Data is deemed reliable but is not guaranteed accurate by Pillar 9â„¢. The trademarks MLS®, Multiple Listing Service® and the associated logos are owned by The Canadian Real Estate Association (CREA) and identify the quality of services provided by real estate professionals who are members of CREA. Used under license.