

\$549,900 - 1810 & 1812 26 Ave, Delburne

MLS® #A2224052

\$549,900

0 Bedroom, 0.00 Bathroom, 2,167 sqft

Multi-Family on 0.16 Acres

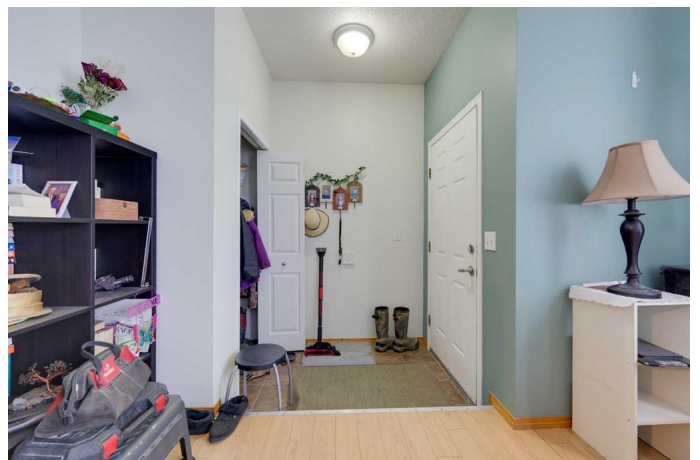
NONE, Delburne, Alberta

Here is your chance to own a modern fully rented full duplex in the Village of Delburne. With limited supply of rental homes, this type of property always has a waiting list to sign a lease. Built in 1994 this Bungalow style Duplex is under one property Title. You could buy as a first time home owner and rent out the other side to make your payments. Unit 1810 is 1104 sq ft and includes 4 bedrooms and 2.5 baths. Basement is fully developed. Unit 1812 is 1063 sq ft includes 5 bedrooms and 2.5 baths. This duplex is in a great location, close to the school, shopping, Arena, Ball Diamonds and other amenities. Each side is fully fenced, includes a garden shed on each unit, and has high speed fiber optics installed. High demand for rentals in Delburne.

Built in 1994

Essential Information

MLS® #	A2224052
Price	\$549,900
Bathrooms	0.00
Square Footage	2,167
Acres	0.16
Year Built	1994
Type	Multi-Family
Sub-Type	Duplex
Style	Side by Side
Status	Active



Community Information

Address	1810 & 1812 26 Ave
Subdivision	NONE
City	Delburne
County	Red Deer County
Province	Alberta
Postal Code	T0M 0V0

Amenities

Parking Spaces	4
Parking	Off Street

Interior

Appliances	Dishwasher, Refrigerator, Stove(s), Washer/Dryer
Heating	Forced Air, Natural Gas
Cooling	None

Additional Information

Date Listed	May 23rd, 2025
Days on Market	21
Zoning	R2

Listing Details

Listing Office	Royal LePage Network Realty Corp.
----------------	-----------------------------------

Data is supplied by Pillar 9â„¢ MLSÂ® System. Pillar 9â„¢ is the owner of the copyright in its MLSÂ® System. Data is deemed reliable but is not guaranteed accurate by Pillar 9â„¢. The trademarks MLSÂ®, Multiple Listing ServiceÂ® and the associated logos are owned by The Canadian Real Estate Association (CREA) and identify the quality of services provided by real estate professionals who are members of CREA. Used under license.