

\$235,000 - 12, 34364 Range Road 42, Rural Mountain View County

MLS® #A2224204

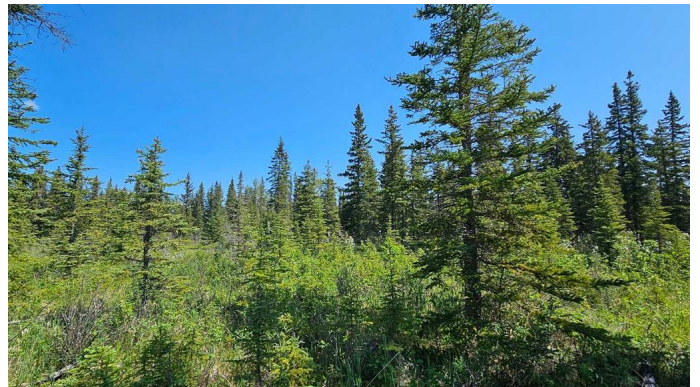
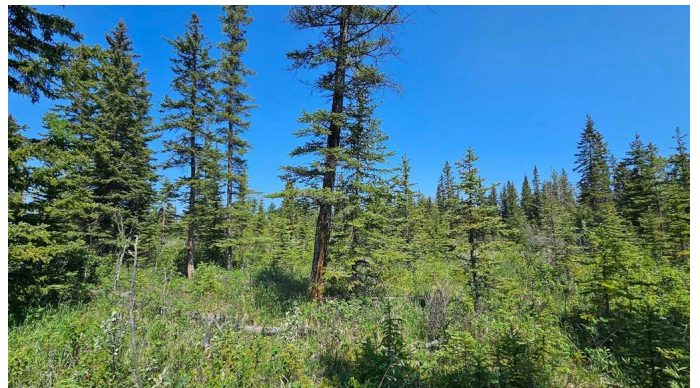
\$235,000

0 Bedroom, 0.00 Bathroom,
Land on 2.82 Acres

NONE, Rural Mountain View County, Alberta

Welcome to Riverside Green â€” a stunning new subdivision that blends serene natural beauty with ultimate convenience. Lot 12 offers a rare opportunity to design and build your dream home on 2.82 acres of pristine, treed land. Nestled in privacy and surrounded by nature, this lot provides the perfect canvas to create your ideal layout â€” whether thatâ€™s a sprawling custom home, detached garage, or a graceful circular driveway winding through the trees. Electricity and natural gas are already at the property line, making the planning process that much smoother. With ample space and, youâ€™re free to bring your vision to life in a setting that feels both tucked away and entirely accessible. Just a short walk brings you to the scenic Red Deer River â€” a paradise for anglers, kayakers, and those who appreciate a peaceful riverside stroll.

Adventure seekers will love the proximity to crown land with well-marked snowmobile and ATV trails just 10 minutes to the west. Golf enthusiasts will be thrilled to find multiple championship golf courses within a 20-minute drive. Riverside Green is where crisp air, towering trees, roaming wildlifeâ€”from deer and elk to moose and waterfowl, and endless potential come together in perfect harmony. Whether you're envisioning a family retreat, a forever home, or a tranquil getaway, this lot is your blank slate in natureâ€™s masterpiece. Your dream starts here. Come walk the land



and imagine the possibilities. â€œHome Is
Where Your Story Begins!â€• *NOTE There
are currently 5 lots listed, but all 11 lots in
Riverside Green are available for sale*

Essential Information

| | |
|-----------|------------------|
| MLS® # | A2224204 |
| Price | \$235,000 |
| Bathrooms | 0.00 |
| Acres | 2.82 |
| Type | Land |
| Sub-Type | Residential Land |
| Status | Active |

Community Information

| | |
|-------------|----------------------------|
| Address | 12, 34364 Range Road 42 |
| Subdivision | NONE |
| City | Rural Mountain View County |
| County | Mountain View County |
| Province | Alberta |
| Postal Code | T0M 1X0 |

Additional Information

| | |
|----------------|----------------|
| Date Listed | May 23rd, 2025 |
| Days on Market | 49 |
| Zoning | R-CR1 |

Listing Details

| | |
|----------------|------------|
| Listing Office | CIR Realty |
|----------------|------------|

Data is supplied by Pillar 9â„¢ MLSÂ® System. Pillar 9â„¢ is the owner of the copyright in its MLSÂ® System. Data is deemed reliable but is not guaranteed accurate by Pillar 9â„¢. The trademarks MLSÂ®, Multiple Listing ServiceÂ® and the associated logos are owned by The Canadian Real Estate Association (CREA) and identify the quality of services provided by real estate professionals who are members of CREA. Used under license.