

# \$289,900 - 403 C. Prowse Avenue, Gleichen

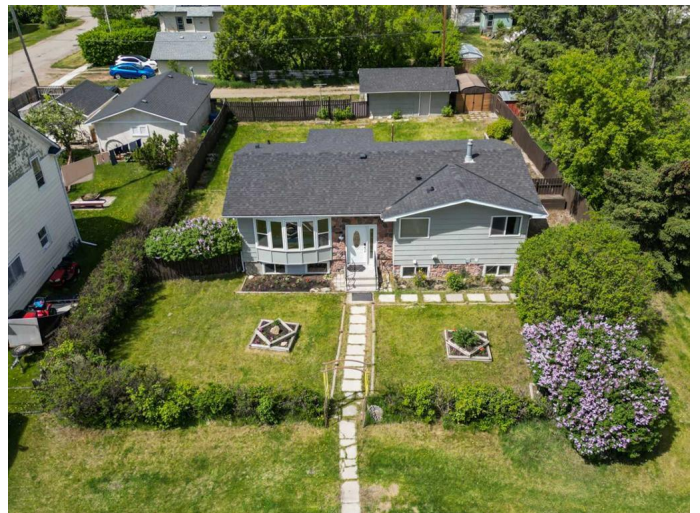
MLS® #A2225483

**\$289,900**

3 Bedroom, 2.00 Bathroom, 1,104 sqft  
Residential on 0.19 Acres

NONE, Gleichen, Alberta

Charming Bungalow on a Spacious Lot in Gleichen with just over 2200 Sq.Ft. of developed living space. Discover the quiet charm of Gleichen, just a quick 25-minute drive east of Strathmore with convenient access off Highway 1. Nestled at the end of a tranquil street, this beautifully updated bungalow sits on a generous, mature lot, offering a serene setting with plenty of privacy and space to unwind. Step inside and youâ€™ll be welcomed by a bright, open-concept layout featuring a large picture window that floods the living room with natural light. The kitchen is a true highlightâ€”designed for both functionality and styleâ€”with ample cabinetry and counter space, perfect for everyday cooking or entertaining. From the dining area, sliding glass doors lead to a multi-level deck, ideal for hosting guests or simply enjoying your morning coffee. Partially covered, the deck extends your living space into the outdoors for much of the year. The backyard is a dream for nature lovers and families alike, with tons of space to play, garden, or relax. The main floor also offers two generously sized bedrooms with ample closet space and a full 4-piece bath. Head downstairs to a fully finished lower level. This level offers flexible living with a spacious family room, third bedroom, 3-piece bathroom, and a large laundry/utility room complete with a sink. The oversized single garage off the back lane, extra shed storage, and plenty of space for RV parking make this



property both functional and versatile. Located just across from a park and playground, and bordered by open fields to the north, youâ€™ll enjoy the peaceful small-town vibe with all the essentials close by.

Built in 1977

**Essential Information**

MLS® #	A2225483
Price	\$289,900
Bedrooms	3
Bathrooms	2.00
Full Baths	2
Square Footage	1,104
Acres	0.19
Year Built	1977
Type	Residential
Sub-Type	Detached
Style	Bungalow
Status	Active

**Community Information**

Address	403 C. Prowse Avenue
Subdivision	NONE
City	Gleichen
County	Wheatland County
Province	Alberta
Postal Code	T0J 1N0

**Amenities**

Parking Spaces	2
Parking	Single Garage Detached
# of Garages	1

**Interior**

Interior Features	Soaking Tub
Appliances	Dishwasher, Dryer, Electric Stove, Range Hood, Refrigerator, Washer, Window Coverings

Heating	Forced Air
Cooling	None
Has Basement	Yes
Basement	Finished, Full

## Exterior

Exterior Features	Private Yard
Lot Description	Back Lane, Back Yard, Front Yard, Lawn
Roof	Asphalt Shingle
Construction	Stone, Vinyl Siding, Wood Frame
Foundation	Poured Concrete

## Additional Information

Date Listed	May 28th, 2025
Days on Market	22
Zoning	HRG

## Listing Details

Listing Office	RE/MAX Key
----------------	------------

Data is supplied by Pillar 9â„¢ MLS® System. Pillar 9â„¢ is the owner of the copyright in its MLS® System. Data is deemed reliable but is not guaranteed accurate by Pillar 9â„¢. The trademarks MLS®, Multiple Listing Service® and the associated logos are owned by The Canadian Real Estate Association (CREA) and identify the quality of services provided by real estate professionals who are members of CREA. Used under license.