

# \$745,000 - 39 Hampton Crescent, Sylvan Lake

MLS® #A2229265

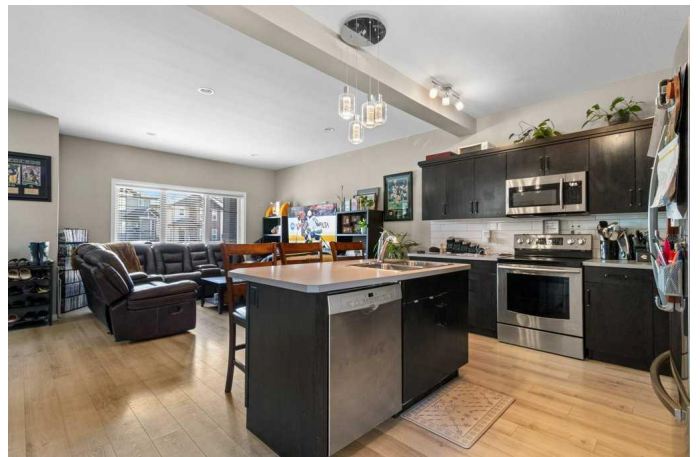
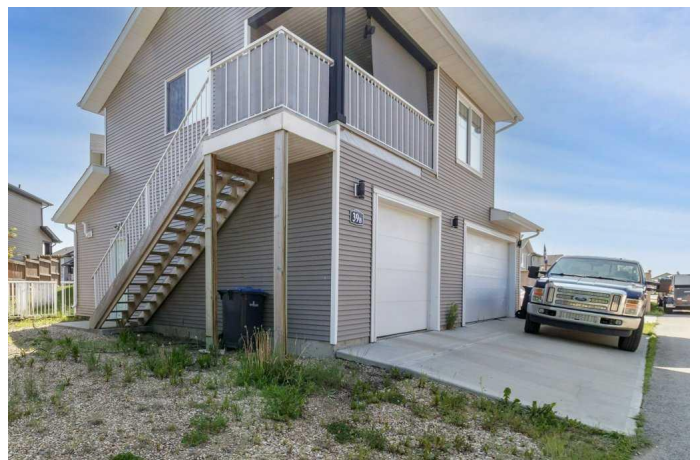
**\$745,000**

4 Bedroom, 4.00 Bathroom, 1,514 sqft

Residential on 0.13 Acres

Hewlett Park, Sylvan Lake, Alberta

Located in the town of Sylvan Lake, home to a beautiful lake and vibrant community, this charming two-story home with a covered front porch offers a perfect blend of comfort and functionality. With over 1500 square feet of living space, the main level features an open-concept design with laminate flooring, a stylish kitchen complete with an island and sink, and a spacious living room ideal for entertaining. A convenient 2-piece bathroom and air conditioning completes the main floor. Upstairs, youâ€™™ll find three bedrooms, including a primary suite with a walk-in closet and private 3-piece ensuite, as well as an additional 3-piece bathroom and upstairs laundry. Adding even more value, this property includes a legal suite situated above the detached triple-car garage. The suite features its own bedroom, kitchen with island, living room, laundry, and 3-piece bathroom all with air conditioningâ€™™perfect for guests or extended family. This unique home offers exceptional space and versatility in one of Central Albertaâ€™™s most desirable communities.



Built in 2016

### **Essential Information**

MLS® #	A2229265
Price	\$745,000
Bedrooms	4
Bathrooms	4.00
Full Baths	3
Half Baths	1
Square Footage	1,514
Acres	0.13
Year Built	2016
Type	Residential
Sub-Type	Detached
Style	2 Storey
Status	Active

### **Community Information**

Address	39 Hampton Crescent
Subdivision	Hewlett Park
City	Sylvan Lake
County	Red Deer County
Province	Alberta
Postal Code	T4S 0N2

### **Amenities**

Parking Spaces	3
Parking	Triple Garage Detached
# of Garages	2

### **Interior**

Interior Features	Kitchen Island, Open Floorplan
Appliances	Dishwasher, Dryer, Garage Control(s), Microwave, Refrigerator, Stove(s), Washer
Heating	Forced Air
Cooling	Central Air
Has Basement	Yes
Basement	Finished, Full

## Exterior

Exterior Features	None
Lot Description	Irregular Lot
Roof	Asphalt Shingle
Construction	Brick, Vinyl Siding
Foundation	Poured Concrete

## Additional Information

Date Listed	June 18th, 2025
Days on Market	7
Zoning	R5

## Listing Details

Listing Office	Royal LePage Network Realty Corp.
----------------	-----------------------------------

Data is supplied by Pillar 9â„¢ MLSÂ® System. Pillar 9â„¢ is the owner of the copyright in its MLSÂ® System. Data is deemed reliable but is not guaranteed accurate by Pillar 9â„¢. The trademarks MLSÂ®, Multiple Listing ServiceÂ® and the associated logos are owned by The Canadian Real Estate Association (CREA) and identify the quality of services provided by real estate professionals who are members of CREA. Used under license.