

\$649,900 - 15421 104b Street, Rural Grande Prairie No. 1, County of

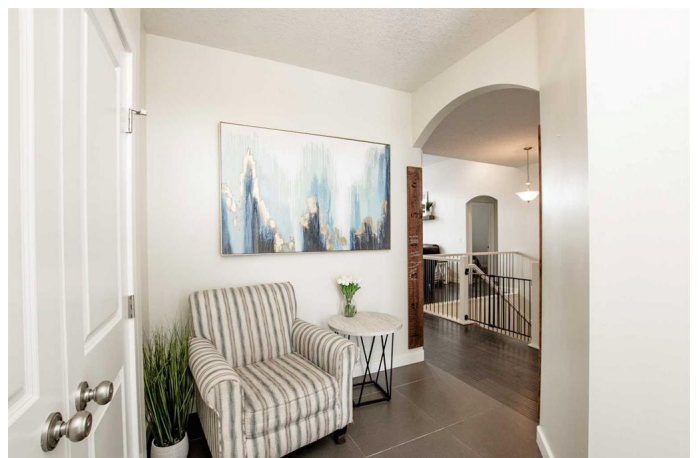
MLS® #A2229270

\$649,900

5 Bedroom, 3.00 Bathroom, 1,350 sqft
Residential on 0.17 Acres

Whispering Ridge, Rural Grande Prairie No. 1,
County of, Alberta

Welcome to this beautifully designed home in the sought-after community of Whispering Ridge, located on a quiet street with county taxes. Move-in ready and impeccably maintained, this home features 5 bedrooms, 3 bathrooms, and a triple heated garage—perfect for all seasons! Step inside to find an inviting open concept layout with air conditioning, stylish finishes, and an abundance of natural light. The spacious tiled entry provides the perfect welcoming space complete with a large closet. The bright kitchen boasts crisp white cabinets paired with stainless steel appliances. With a corner pantry, plenty of cabinets for storage, tons of counter space and an island with eating bar, this kitchen is a dream. Hosting is made easy with a dining area and patio doors to back deck. The living room features a gorgeous stone gas fireplace with floating mantle. The main floor hosts a spacious primary bedroom with 3pc ensuite & walk in closet, two more bedroom, one currently used as an office, and a full bath. The fully finished basement offers a secondary living space with gas fireplace, a bar with hookups for a wet bar, another full bathroom, a 4th bedroom plus a 5th big room perfect for a gym, playroom or bedroom, making it ideal for guests or family. Enjoy the beautifully landscaped yard, hot tub, and large deck perfect for relaxing or entertaining. With



nothing left to do but unpack, this home is ready for you to move in and enjoy!

Built in 2015

Essential Information

| | |
|----------------|-------------|
| MLS® # | A2229270 |
| Price | \$649,900 |
| Bedrooms | 5 |
| Bathrooms | 3.00 |
| Full Baths | 3 |
| Square Footage | 1,350 |
| Acres | 0.17 |
| Year Built | 2015 |
| Type | Residential |
| Sub-Type | Detached |
| Style | Bungalow |
| Status | Active |

Community Information

| | |
|-------------|---------------------------------------|
| Address | 15421 104b Street |
| Subdivision | Whispering Ridge |
| City | Rural Grande Prairie No. 1, County of |
| County | Grande Prairie No. 1, County of |
| Province | Alberta |
| Postal Code | T8X 0L7 |

Amenities

| | |
|----------------|------------------------|
| Parking Spaces | 6 |
| Parking | Triple Garage Attached |
| # of Garages | 3 |

Interior

| | |
|-------------------|----------------------------------------------------------------------------------------------------------------------------|
| Interior Features | Kitchen Island, Open Floorplan, Pantry, See Remarks |
| Appliances | Central Air Conditioner, Dishwasher, Dryer, Garage Control(s), Microwave, Refrigerator, Stove(s), Washer, Window Coverings |
| Heating | Forced Air |
| Cooling | Central Air |
| Fireplace | Yes |

| | |
|-----------------|----------------|
| # of Fireplaces | 2 |
| Fireplaces | Gas |
| Has Basement | Yes |
| Basement | Finished, Full |

Exterior

| | |
|-------------------|---------------------|
| Exterior Features | None |
| Lot Description | Landscaped |
| Roof | Asphalt Shingle |
| Construction | Stone, Vinyl Siding |
| Foundation | Poured Concrete |

Additional Information

| | |
|----------------|-----------------|
| Date Listed | June 23rd, 2025 |
| Days on Market | 15 |
| Zoning | RR-1 |

Listing Details

| | |
|----------------|-----------------------|
| Listing Office | RE/MAX Grande Prairie |
|----------------|-----------------------|

Data is supplied by Pillar 9â„¢ MLS® System. Pillar 9â„¢ is the owner of the copyright in its MLS® System. Data is deemed reliable but is not guaranteed accurate by Pillar 9â„¢. The trademarks MLS®, Multiple Listing Service® and the associated logos are owned by The Canadian Real Estate Association (CREA) and identify the quality of services provided by real estate professionals who are members of CREA. Used under license.