

# \$38,000 - 142 1 Avenue W, Craigmyle

MLS® #A2231849

**\$38,000**

0 Bedroom, 0.00 Bathroom,  
Land on 0.14 Acres

NONE, Craigmyle, Alberta

Great opportunity for the investor or home builder wanting to build their own dream home and this three lot parcel of land. 150x125 sq. ft vacant lot(s) in the Hamlet of Craigmyle. The center lot has gas, sewer and water to the lot line, power is on the street.

## Essential Information

MLS® #	A2231849
Price	\$38,000
Bathrooms	0.00
Acres	0.14
Type	Land
Sub-Type	Residential Land
Status	Active

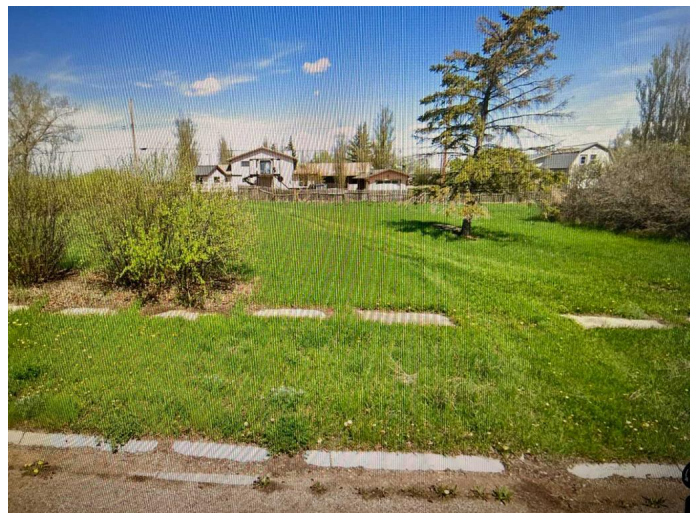
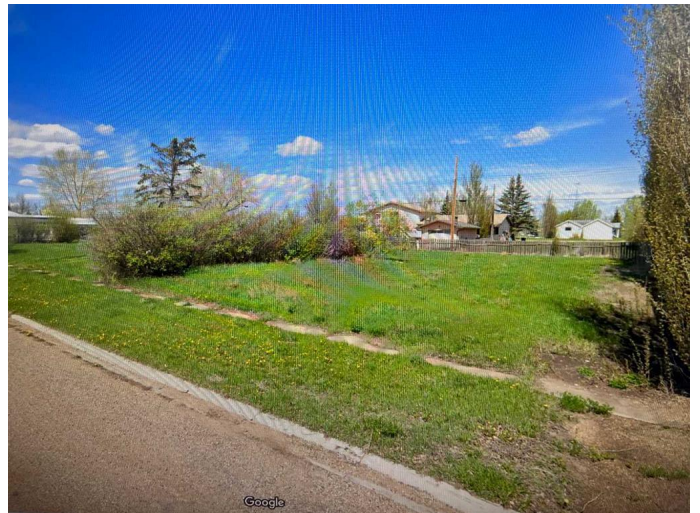
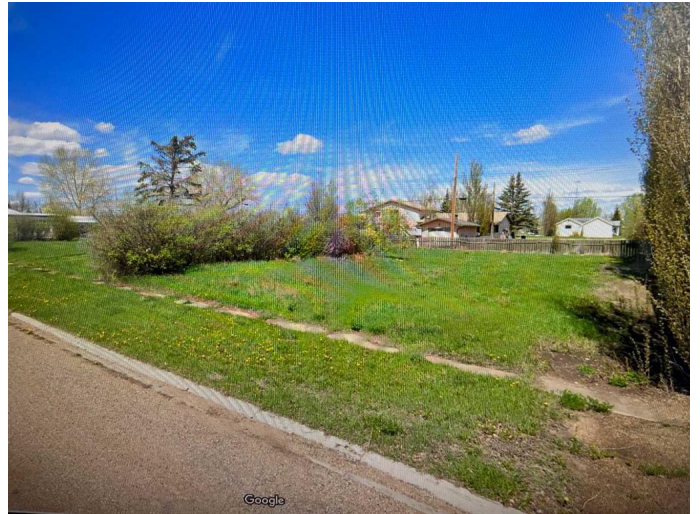
## Community Information

Address	142 1 Avenue W
Subdivision	NONE
City	Craigmyle
County	Starland County
Province	Alberta
Postal Code	T0J 0T0

## Additional Information

Date Listed	June 16th, 2025
Days on Market	6
Zoning	HR

## Listing Details



Listing Office

4th Street Holdings Ltd.

Data is supplied by Pillar 9â„¢ MLS® System. Pillar 9â„¢ is the owner of the copyright in its MLS® System. Data is deemed reliable but is not guaranteed accurate by Pillar 9â„¢. The trademarks MLS®, Multiple Listing Service® and the associated logos are owned by The Canadian Real Estate Association (CREA) and identify the quality of services provided by real estate professionals who are members of CREA. Used under license.