

\$475,000 - 9 Rose Crescent, Red Deer

MLS® #A2232088

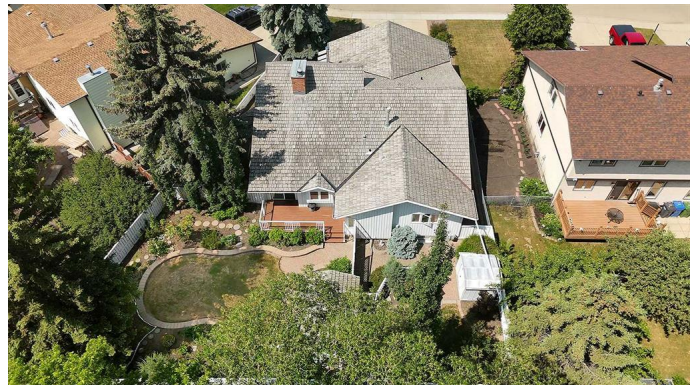
\$475,000

3 Bedroom, 3.00 Bathroom, 2,043 sqft

Residential on 0.18 Acres

Rosedale Meadows, Red Deer, Alberta

ORIGINAL OWNER HOME ~ Welcome to 9 Rose Crescent ~ Situated on a beautiful lot facing a green space this custom built home is sure to impress. Pride of ownership is evident the moment you step into this home showcasing a stunning oak spiral staircase with access to the loft and the beautiful and bright living room with gleaming hardwood floors, vaulted cedar ceilings, a wood stove (as-is) and of course the one of a kind nook with a built in bench overlooking the brick facing fireplace (now electric, previously wood). The main floor layout is divine with a spacious formal dining space, oversized kitchen space with ample cabinet & counter space, a pantry and centre island plus a breakfast nook which overlooks the backyard. The main level is home to two bedrooms including the spacious primary suite with a grand ensuite including a soaker tub, a double vanity plus a walk-in closet. Off of the double garage you can access the main floor laundry with a man door to the side yard. The fully developed basement offers an immaculate family room accompanied by a gas fireplace, the third bedroom (window doesn't meet egress), and a 3pc bathroom. Tons of storage space off of the utility room in the crawl space. The picturesque yard is where the original owners spent countless hours over the years cherishing what they had created. There are two storage sheds, a nice size deck and room for an additional garage if desired. Homes like this don't go for sale often ~ 9 Rose Crescent



is a pleasure to view.

Built in 1984

Essential Information

| | |
|----------------|-------------------|
| MLS® # | A2232088 |
| Price | \$475,000 |
| Bedrooms | 3 |
| Bathrooms | 3.00 |
| Full Baths | 3 |
| Square Footage | 2,043 |
| Acres | 0.18 |
| Year Built | 1984 |
| Type | Residential |
| Sub-Type | Detached |
| Style | 1 and Half Storey |
| Status | Active |

Community Information

| | |
|-------------|------------------|
| Address | 9 Rose Crescent |
| Subdivision | Rosedale Meadows |
| City | Red Deer |
| County | Red Deer |
| Province | Alberta |
| Postal Code | T4P 3K3 |

Amenities

| | |
|----------------|------------------------|
| Parking Spaces | 2 |
| Parking | Double Garage Attached |
| # of Garages | 2 |

Interior

| | |
|-------------------|---|
| Interior Features | Ceiling Fan(s), Closet Organizers, Kitchen Island, No Animal Home, Pantry, See Remarks, Storage, Vaulted Ceiling(s) |
| Appliances | Dishwasher, Garage Control(s), Microwave, Oven, Refrigerator, Stove(s), Washer/Dryer, Window Coverings |
| Heating | Forced Air |
| Cooling | None |
| Fireplace | Yes |

| | |
|-----------------|--|
| # of Fireplaces | 3 |
| Fireplaces | Brick Facing, Electric, Family Room, Living Room, Tile, Wood Burning Stove |
| Has Basement | Yes |
| Basement | Crawl Space, Finished, Full |

Exterior

| | |
|-------------------|---|
| Exterior Features | Garden |
| Lot Description | Back Yard, Fruit Trees/Shrub(s), Landscaped, Pie Shaped Lot |
| Roof | Cedar Shake |
| Construction | Wood Frame, Wood Siding |
| Foundation | Poured Concrete |

Additional Information

| | |
|----------------|-----------------|
| Date Listed | June 16th, 2025 |
| Days on Market | 3 |
| Zoning | R-L |

Listing Details

| | |
|----------------|--------------------|
| Listing Office | Century 21 Maximum |
|----------------|--------------------|

Data is supplied by Pillar 9â„¢ MLSÂ® System. Pillar 9â„¢ is the owner of the copyright in its MLSÂ® System. Data is deemed reliable but is not guaranteed accurate by Pillar 9â„¢. The trademarks MLSÂ®, Multiple Listing ServiceÂ® and the associated logos are owned by The Canadian Real Estate Association (CREA) and identify the quality of services provided by real estate professionals who are members of CREA. Used under license.