

\$500,000 - 222 Rivermill Manor W, Lethbridge

MLS® #A2233030

\$500,000

5 Bedroom, 3.00 Bathroom, 1,082 sqft

Residential on 0.11 Acres

Riverstone, Lethbridge, Alberta

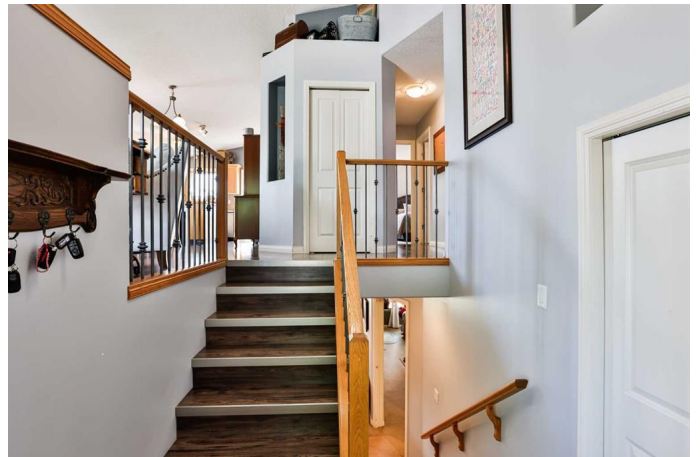
As you drive up this quiet street in the desirable neighborhood of Riverstone, you are greeted by a beautiful Silver Maple tree that showcases this home. This bi-level features five bedrooms and three bathrooms! As you enter the foyer, youâ€™ll love the Iron/maple spindle railing.

Laminate floors run throughout the main level, which boasts tall vaulted ceilings and ample natural light that floods into the home! The primary suite is located at the back of the house and includes its own en suite bathroom and double mirrored closet doors.

Since the basement is a walkout, natural light also floods into the lower level, where you will find two large additional bedrooms. You will appreciate the charming brick fireplace and wall detail featured in the basement.

The backyard is a showstopper, complete with a stunning pergola made of cedar/pressure treated wood topped with a metal roof and adorned with hanging lights. It provides a fantastic space for entertaining. In addition to the pergola, the backyard features underground sprinklers, raised flower beds, a built-in swingset, and the perfect spot for an above-ground pool.

Thereâ€™s a paved back alley adjacent to the home, ensuring that youâ€™re not right up against your neighbors. Speaking of



neighbors, I've heard they are fantastic, too!

Recent updates to this home include a new 60-gallon hot water tank installed in December 2024, a new roof installed in 2015, and the refrigerator and dishwasher are approximately 3.5 years old.

Call your favorite REALTOR® today to book a showing—this home will not last long!

Built in 2005

Essential Information

MLS® #	A2233030
Price	\$500,000
Bedrooms	5
Bathrooms	3.00
Full Baths	3
Square Footage	1,082
Acres	0.11
Year Built	2005
Type	Residential
Sub-Type	Detached
Style	Bi-Level
Status	Active

Community Information

Address	222 Rivermill Manor W
Subdivision	Riverstone
City	Lethbridge
County	Lethbridge
Province	Alberta
Postal Code	T1K 8C5

Amenities

Parking Spaces	4
Parking	Double Garage Attached
# of Garages	2

Interior

Interior Features	Kitchen Island, Laminate Counters, Pantry
Appliances	Dishwasher, Electric Cooktop, Garburator, Microwave, Range Hood, Refrigerator, Washer/Dryer, Window Coverings
Heating	Forced Air, Natural Gas
Cooling	None
Fireplace	Yes
# of Fireplaces	1
Fireplaces	Gas
Has Basement	Yes
Basement	Finished, Full, Walk-Up To Grade

Exterior

Exterior Features	Private Yard
Lot Description	Back Lane, Back Yard, Front Yard, Landscaped, Street Lighting, Underground Sprinklers
Roof	Asphalt Shingle
Construction	Stone, Vinyl Siding, Wood Frame
Foundation	Poured Concrete

Additional Information

Date Listed	June 20th, 2025
Days on Market	1
Zoning	R-L

Listing Details

Listing Office	RE/MAX REAL ESTATE - LETHBRIDGE
----------------	---------------------------------

Data is supplied by Pillar 9â„¢ MLSÂ® System. Pillar 9â„¢ is the owner of the copyright in its MLSÂ® System. Data is deemed reliable but is not guaranteed accurate by Pillar 9â„¢. The trademarks MLSÂ®, Multiple Listing ServiceÂ® and the associated logos are owned by The Canadian Real Estate Association (CREA) and identify the quality of services provided by real estate professionals who are members of CREA. Used under license.