

# \$85,000 - 306 Aspen Bay, Brightsand Lake

MLS® #A2233710

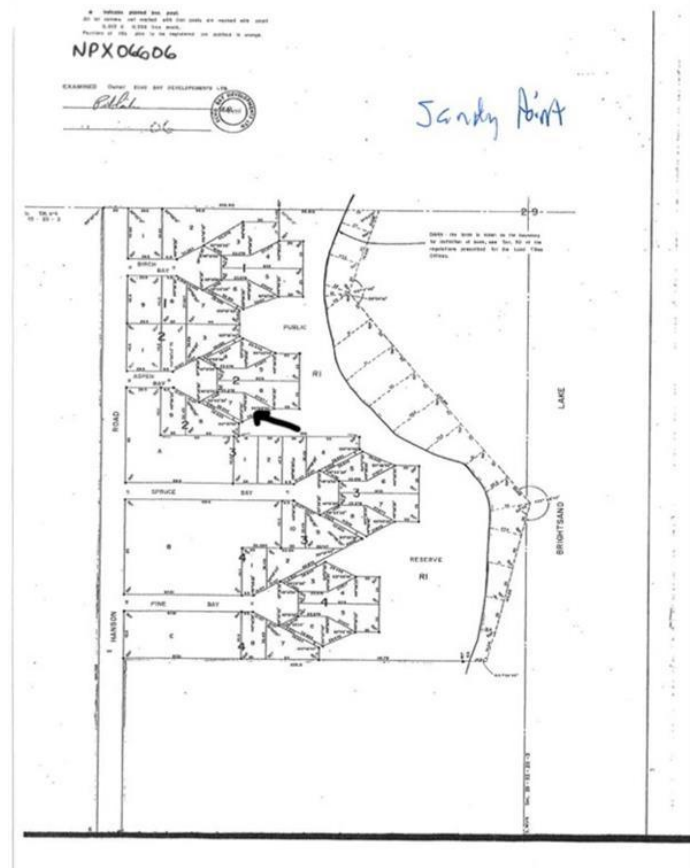
**\$85,000**

0 Bedroom, 0.00 Bathroom,  
Land on 0.22 Acres

NONE, Brightsand Lake, Saskatchewan

Spacious cul-de-sac lot set in the spruce close to the lakeshore in the Sandy Point subdivision, Brightsand Lake SK.

Environmental reserve between lot and shoreline. Brightsand is a spring fed lake resulting in clear and clean water. Family friendly resort community with year around residents. Underground power to boundary. GST applies. Adjacent lot also available. Prospective buyers are advised that lots within the Lakeshore Development District are primarily zoned for residential use and the Rural Municipality of Mervin expects owners to only place an RV on the property while constructing a single- detached dwelling. For current land use bylaws, contact the RM of Mervin office in Turtleford. There is also an opportunity for investors or developers looking to grow their portfolio-this offering includes a wholesale option when acquiring multiple parcels as a single package. It's well-suited for future retail lot sales, phased development, or a long term investment in a sought-after lake destination. Please contact the listing office to request a detailed information package.



## Essential Information

MLS® #	A2233710
Price	\$85,000
Bathrooms	0.00
Acres	0.22

Type	Land
Sub-Type	Residential Land
Status	Active

### Community Information

Address	306 Aspen Bay
Subdivision	NONE
City	Brightsand Lake
County	Saskatchewan
Province	Saskatchewan
Postal Code	S0M 0H0

### Exterior

Lot Description	Irregular Lot, Treed
-----------------	----------------------

### Additional Information

Date Listed	June 23rd, 2025
Days on Market	16
Zoning	LD1

### Listing Details

Listing Office	RE/MAX OF LLOYDMINSTER
----------------	------------------------

Data is supplied by Pillar 9â„¢ MLSÂ® System. Pillar 9â„¢ is the owner of the copyright in its MLSÂ® System. Data is deemed reliable but is not guaranteed accurate by Pillar 9â„¢. The trademarks MLSÂ®, Multiple Listing ServiceÂ® and the associated logos are owned by The Canadian Real Estate Association (CREA) and identify the quality of services provided by real estate professionals who are members of CREA. Used under license.