

# \$279,900 - 246 Pinnacle Drive, Grande Prairie

MLS® #A2233801

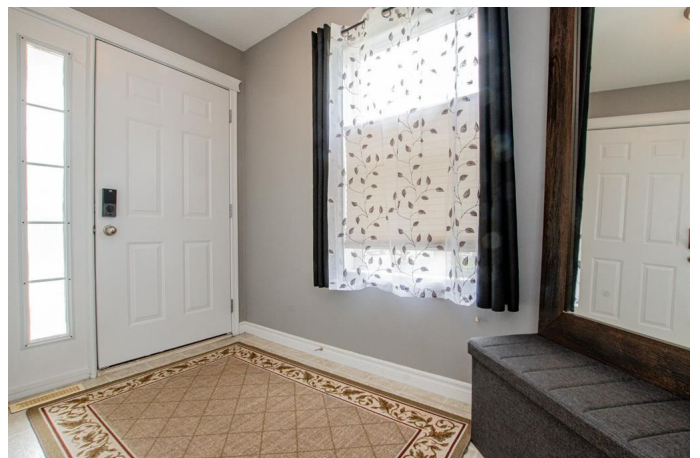
**\$279,900**

2 Bedroom, 1.00 Bathroom, 973 sqft

Residential on 0.06 Acres

Pinnacle Ridge., Grande Prairie, Alberta

Welcome to this tastefully updated 2-bedroom, 1-bathroom end-unit townhouse offering approximately 973 sq ft of refined living space. Say goodbye to stairs—this bungalow offers a spacious, open-concept floor plan all on one level including main floor laundry providing accessible living. From the moment you step inside, you™ll be greeted by freshly painted interiors, custom blinds throughout, and an inviting main floor designed for both comfort and style. The spacious living area flows seamlessly into a well-appointed kitchen featuring motion sensor light strips and a speed bake oven—perfect for the home chef. Two sunlit bedrooms provide serene retreats and share a full bath completing the main floor. The thoughtfully framed basement—with nearly complete electrical, plumbing, and a functioning bathroom—presents a rare opportunity to create a fully customized lower-level sanctuary, home office, or additional suite. Additional highlights include a brand-new washer, no HOA fees, new security system installed and a prime location ideal for first-time homeowners, savvy investors, or renovators with vision. With solid bones and remarkable upside, this home is more than move-in ready—it™s the canvas for your next chapter. Opportunities like this are rare—schedule your private showing today and experience the charm, value, and promise of this exceptional property.



Built in 2003

### Essential Information

MLS® #	A2233801
Price	\$279,900
Bedrooms	2
Bathrooms	1.00
Full Baths	1
Square Footage	973
Acres	0.06
Year Built	2003
Type	Residential
Sub-Type	Row/Townhouse
Style	Bungalow
Status	Active

### Community Information

Address	246 Pinnacle Drive
Subdivision	Pinnacle Ridge.
City	Grande Prairie
County	Grande Prairie
Province	Alberta
Postal Code	T8W 2W6

### Amenities

Parking Spaces	2
Parking	Off Street, Parking Pad

### Interior

Interior Features	Open Floorplan, Pantry, See Remarks
Appliances	Dishwasher, Microwave, Refrigerator, Stove(s), Washer/Dryer, Window Coverings
Heating	Forced Air
Cooling	None
Fireplace	Yes
# of Fireplaces	1
Fireplaces	Gas
Has Basement	Yes
Basement	Full, Partially Finished

**Exterior**

Exterior Features	None
Lot Description	Landscaped
Roof	Asphalt Shingle
Construction	Brick, Vinyl Siding
Foundation	Poured Concrete

**Additional Information**

Date Listed	June 25th, 2025
Days on Market	16
Zoning	RC

**Listing Details**

Listing Office	RE/MAX Grande Prairie
----------------	-----------------------

Data is supplied by Pillar 9â„¢ MLS® System. Pillar 9â„¢ is the owner of the copyright in its MLS® System. Data is deemed reliable but is not guaranteed accurate by Pillar 9â„¢. The trademarks MLS®, Multiple Listing Service® and the associated logos are owned by The Canadian Real Estate Association (CREA) and identify the quality of services provided by real estate professionals who are members of CREA. Used under license.