

\$249,900 - (h17 Mall Unit) 183, 260300 Writing Creek Crescent Ne, Rural Rocky View County

MLS® #A2234341

\$249,900

0 Bedroom, 0.00 Bathroom,
Commercial on 0.01 Acres

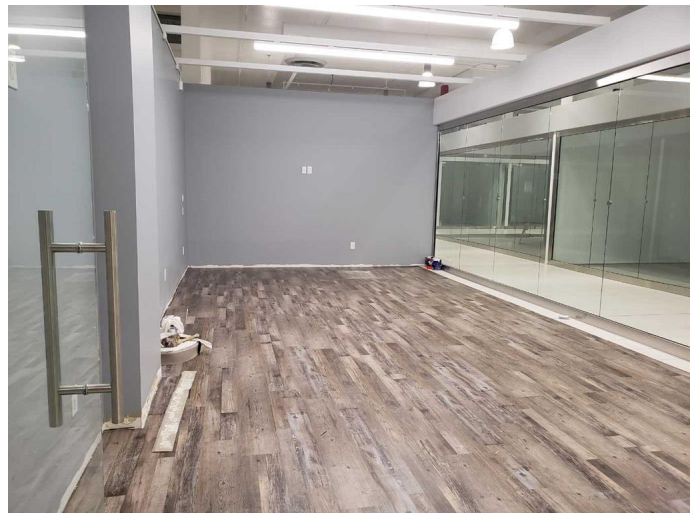
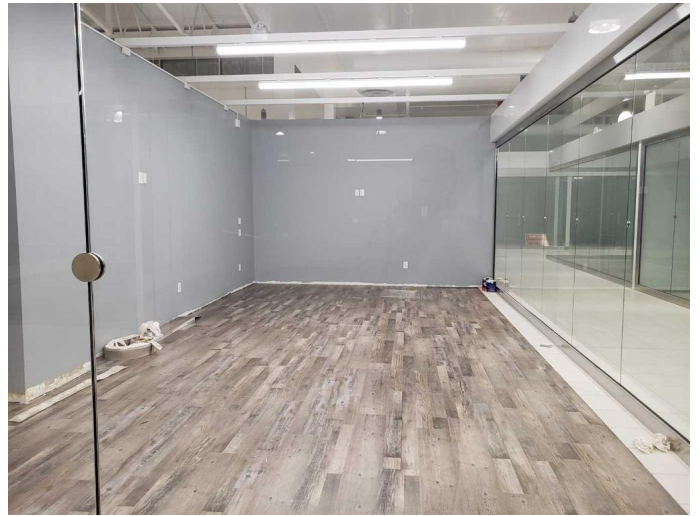
NONE, Rural Rocky View County, Alberta

Unit H17 Triple Unit in the center of the mall.
Close to Stage. Lots of foot traffic.

Built in 2018

Essential Information

| | |
|------------|------------|
| MLS® # | A2234341 |
| Price | \$249,900 |
| Bathrooms | 0.00 |
| Acres | 0.01 |
| Year Built | 2018 |
| Type | Commercial |
| Sub-Type | Mixed Use |
| Status | Active |



Community Information

| | |
|-------------|---|
| Address | (h17 Mall Unit) 183, 260300 Writing Creek Crescent Ne |
| Subdivision | NONE |
| City | Rural Rocky View County |
| County | Rocky View County |
| Province | Alberta |
| Postal Code | T4A 0X8 |

Additional Information

| | |
|----------------|-----------------|
| Date Listed | June 24th, 2025 |
| Days on Market | 16 |
| Zoning | C2 |

Listing Details

Listing Office

eXp Realty

Data is supplied by Pillar 9â„¢ MLSÂ® System. Pillar 9â„¢ is the owner of the copyright in its MLSÂ® System. Data is deemed reliable but is not guaranteed accurate by Pillar 9â„¢. The trademarks MLSÂ®, Multiple Listing ServiceÂ® and the associated logos are owned by The Canadian Real Estate Association (CREA) and identify the quality of services provided by real estate professionals who are members of CREA. Used under license.