

# \$60,000 - 216 Wellsite Drive, Red Earth Creek

MLS® #A2251942

**\$60,000**

0 Bedroom, 0.00 Bathroom,  
Commercial on 0.00 Acres

NONE, Red Earth Creek, Alberta

Fantastic Opportunity! This 3.61-acre commercial property offers endless potential for your business. Featuring a 2,000 sq. ft. shop with full services already in place, plus a hitching rail for trucks and a large graveled yard, this property is ready to go. Multiple outbuildings are included, giving you even more room for storage or operations. Whether you're looking to buy or lease, this is the perfect spot to establish or grow your company. At just \$60,000, you can't go wrong—call today to book a viewing or get more details!

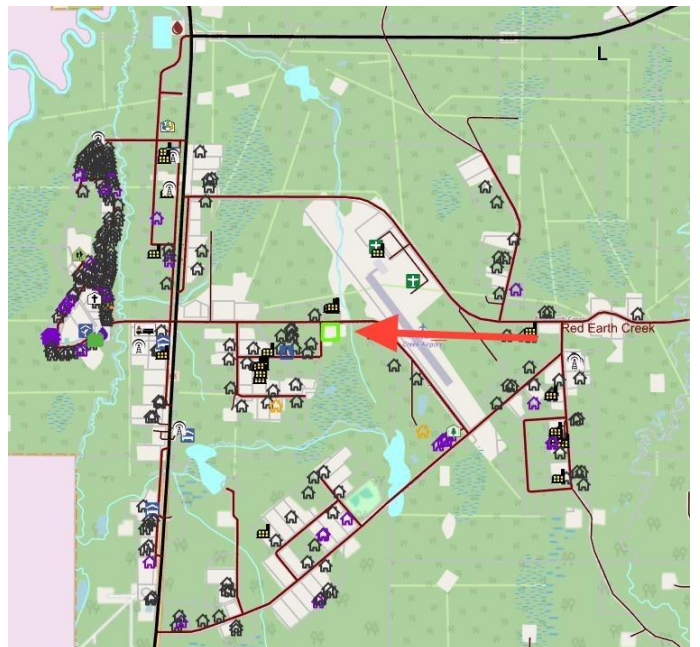
Built in 1980

## Essential Information

MLS® #	A2251942
Price	\$60,000
Bathrooms	0.00
Acres	0.00
Year Built	1980
Type	Commercial
Sub-Type	Mixed Use
Status	Active

## Community Information

Address	216 Wellsite Drive
Subdivision	NONE
City	Red Earth Creek
County	Opportunity No. 17, M.D. of



Province	Alberta
Postal Code	T0G0C1

### **Additional Information**

Date Listed	August 27th, 2025
Zoning	M1

### **Listing Details**

Listing Office	RE/MAX Grande Prairie
----------------	-----------------------

Data is supplied by Pillar 9â„¢ MLS® System. Pillar 9â„¢ is the owner of the copyright in its MLS® System. Data is deemed reliable but is not guaranteed accurate by Pillar 9â„¢. The trademarks MLS®, Multiple Listing Service® and the associated logos are owned by The Canadian Real Estate Association (CREA) and identify the quality of services provided by real estate professionals who are members of CREA. Used under license.