

# \$1,299,000 - 10, 37280 Highway 816, Rural Red Deer County

---

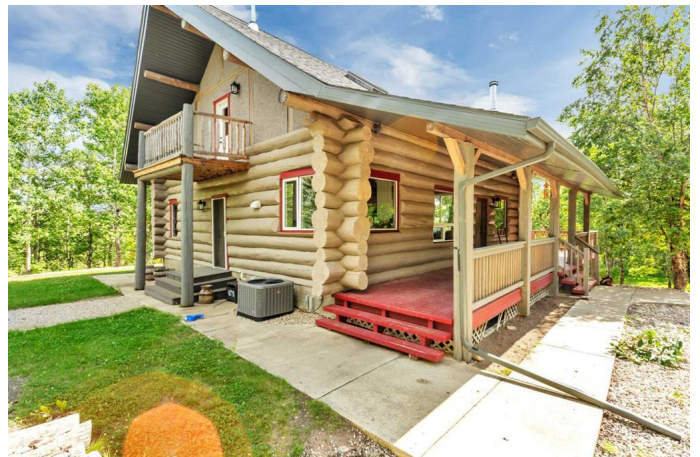
MLS® #A2252059

**\$1,299,000**

0 Bedroom, 0.00 Bathroom,  
Land on 160.00 Acres

NONE, Rural Red Deer County, Alberta

Escape to your own private sanctuary on 160 acres of pristine mixed parkland with open pasture and private clearings, ideally located just 25 km from Red Deer and a short drive to Pine Lake. This rare quarter section offers both seclusion and convenience, making it the perfect blend of country living and accessibility. At the heart of the property is a stunning 1,700+ sq ft log home featuring a wraparound deck and timeless craftsmanship. Thoughtfully updated, the home showcases a renovated kitchen and bathrooms with granite countertops, offering a beautiful balance of rustic charm and modern comfort. The land has plenty of space to build a larger shop or expand as desired. The land itself is rich in opportunity. With a 4 to 5 month carrying capacity of approximately 110 animal units, it's well-suited for ranching or hobby farming. Beyond its agricultural potential, the property is a true recreational paradise. Elk, moose, and deer are frequent visitors, making it a hunter's dream. An extensive network of walking and riding trails weave through the parkland, opening to private clearings and scenic spots perfect for relaxing, exploring, or enjoying the peace of nature with excellent recreational and hunting opportunities. This property is more than land and a home—it's a lifestyle. Whether you're looking for a private family retreat or a working farm operation.



## Essential Information

MLS® #	A2252059
Price	\$1,299,000
Bathrooms	0.00
Acres	160.00
Type	Land
Sub-Type	Residential Land
Status	Active

## Community Information

Address	10, 37280 Highway 816
Subdivision	NONE
City	Rural Red Deer County
County	Red Deer County
Province	Alberta
Postal Code	T4E 0V5

## Amenities

Waterfront	River Access
------------	--------------

## Additional Information

Date Listed	August 27th, 2025
Zoning	AG

## Listing Details

Listing Office	Coldwell Banker OnTrack Realty
----------------	--------------------------------

Data is supplied by Pillar 9â„¢ MLS® System. Pillar 9â„¢ is the owner of the copyright in its MLS® System. Data is deemed reliable but is not guaranteed accurate by Pillar 9â„¢. The trademarks MLS®, Multiple Listing Service® and the associated logos are owned by The Canadian Real Estate Association (CREA) and identify the quality of services provided by real estate professionals who are members of CREA. Used under license.